

Part C Updates

12th Edition



Joan Danaher
Sue Goode
Alex Lazara

The National Early Childhood Technical Assistance Center (NECTAC)

is a program of the

FPG Child Development Institute

of

The University of North Carolina at Chapel Hill

October 2011
Part C Updates

This resource is produced and distributed by the National Early Childhood Technical Assistance Center, funded through cooperative agreement number H326H060005 from the Office of Special Education Programs, U.S. Department of Education. Opinions expressed herein do not necessarily represent the Department of Education's position or policy.

NECTAC is committed to making the information it disseminates fully accessible to all individuals. If you require any of this information in an alternate format, please contact us at the address below. Additional copies of this document are available at cost from NECTAC. A complete list of NECTAC resources is available at our Web site or upon request.

Please cite as:

Danaher, J., Goode, S. & Lazara, A. (Eds.). (2011). *Part C updates* (12th ed.). Chapel Hill: The University of North Carolina, FPG Child Development Institute, National Early Childhood Technical Assistance Center.

Cover photo: Alex Lazara

For more information about NECTAC, please contact us at:
Campus Box 8040, UNC-CH
Chapel Hill, NC 27599-8040

919-962-2001 • phone
919-966-7463 • fax
nectac@unc.edu • email
www.nectac.org • web

Project Directors: *Lynne Kahn*
Project Officer at OSEP: *Julia Martin Eile*



Part C Updates, 12th Edition

Table of Contents

Introduction	iii
Key to State and Jurisdictional Abbreviations	iv

Section I:

Part C Program Administration and Data

Minimum Components Under IDEA of a Statewide Comprehensive System of Early Intervention Services to Infants and Toddlers with Special Needs.....	3
U.S. Department of Education Organization Chart.....	4
Part C Funding Cycles 1987-2011	5
Part C Allocation to State and Jurisdictional Lead Agencies 1996-2012	6
Part C Infant and Toddler Program Federal Appropriations and National Child Count, 1987-2012	8
Number of Children Served Under Part C of IDEA by Age and Percentage of Population Birth through Two Years 1990-2010.....	9
Percentage of Infants and Toddlers Served Under Part C of IDEA by Age Cohort 2004-2010.....	10
Number and Percentage of At-risk Infants and Toddlers Served Under Part C of IDEA 2004-2010 ...	11
Number and Percentage of Infants and Toddlers Ages Birth through 2 Years Served Under Part C of IDEA by Early Intervention Setting U.S. and Outlying Areas 2004-2010...	12
Part B Eligibility Status of Children Exiting Part C Services as of Their Third Birthday By Early Intervention Setting U.S. and Outlying Areas 2004-2009	13
Part C Data Tables and Forms.....	14

Section II:

Part C Program Implementation Resources

Federal Regulations for Part C of the IDEA	17
States' Part C Rules, Regulations and Policies	18
OSEP Policy Letters of Clarification Related to Part C of the IDEA	24
Selected Online Publications and Journal Articles Related to the Implementation of Part C 2010-2011.....	33

Section III:

Part C Program Contact Information

OSEP Part C State Contacts	37
NECTAC List of Part C Lead Agencies.....	39
Part C Coordinators and Infant/Toddler Program Contacts in States and Jurisdictions.....	41
Chairs of State and Jurisdictional Interagency Coordinating Councils.....	49
Contact List of State ICC Staff.....	57

Introduction

Part C Updates is a compilation of information on various aspects of the Early Intervention Program for Infants and Toddlers with Disabilities (Part C) of the Individuals with Disabilities Education Act (IDEA). This is the twelfth volume in a series of compilations, which included two editions of Part H Updates, the former name of the program. The intent of *Part C Updates* is to collect, in a convenient format, a variety of resources that meet the information needs of state and jurisdictional Part C program staff, the Office of Special Education Programs of the U.S. Department of Education, and policy makers at all levels.

We welcome your feedback on the usefulness of the *Part C Updates*. States and jurisdictions are particularly invited to provide updated information to the editors or to the authors of individual documents.

This edition and past editions of the *Part C Updates* are available online at the NECTAC website, <http://www.nectac.org/>.

Joan Danaher
Sue Goode
Alex Lazara

Key to State and Jurisdictional Abbreviations

(Listed alphabetically by abbreviation)

	State/Jurisdiction		State/Jurisdiction
AL	Alabama	MS	Mississippi
AK	Alaska	MT	Montana
AR	Arkansas	NC	North Carolina
AS	American Samoa	ND	North Dakota
AZ	Arizona	NE	Nebraska
BIE	Bureau of Indian Education, Department of the Interior	NV	Nevada
CA	California	NH	New Hampshire
CO	Colorado	NJ	New Jersey
CT	Connecticut	NM	New Mexico
DC	District of Columbia	NY	New York
DE	Delaware	OH	Ohio
FL	Florida	OK	Oklahoma
GA	Georgia	OR	Oregon
GU	Guam	PA	Pennsylvania
HI	Hawaii	PR	Puerto Rico
IA	Iowa	RI	Rhode Island
ID	Idaho	SC	South Carolina
IL	Illinois	SD	South Dakota
IN	Indiana	TN	Tennessee
KS	Kansas	TX	Texas
KY	Kentucky	UT	Utah
LA	Louisiana	VA	Virginia
MA	Massachusetts	VI	Virgin Islands
MD	Maryland	VT	Vermont
ME	Maine	WA	Washington
MI	Michigan	WI	Wisconsin
MN	Minnesota	WV	West Virginia
MO	Missouri	WY	Wyoming
MP	Northern Mariana Islands		

Note: The Pacific jurisdictions of the Federated States of Micronesia (FM), the Republic of the Marshall Islands (MH), and the Republic of Palau (PW) are not currently eligible to participate in Part C

Section I:

Part C Program Administration and Data

Minimum Components Under IDEA of a Statewide Comprehensive System of Early Intervention Services to Infants and Toddlers with Special Needs.....	3
U.S. Department of Education Organization Chart.....	4
Part C Funding Cycles 1987-2011.....	5
Part C Allocation to State and Jurisdictional Lead Agencies 1996-2012.....	6
Part C Infant and Toddler Program Federal Appropriations and National Child Count, 1987-2012.....	8
Number of Children Served Under Part C of IDEA by Age and Percentage of Population Birth through Two Years 1990-2010.....	9
Percentage of Infants and Toddlers Served Under Part C of IDEA by Age Cohort 2004-2010	10
Number and Percentage of At-risk Infants and Toddlers Served Under Part C of IDEA 2004-2010.....	11
Number and Percentage of Infants and Toddlers Ages Birth through 2 Years Served Under Part C of IDEA by Early Intervention Setting U.S. and Outlying Areas 2004-2010...	12
Part B Eligibility Status of Children Exiting Part C Services as of Their Third Birthday By Early Intervention Setting U.S. and Outlying Areas 2004-2009	13
Part C Data Tables and Forms	14

***Minimum Components Under IDEA
of a Statewide, Comprehensive System
of Early Intervention Services
to Infants and Toddlers with Special Needs
(Including American Indian and Homeless Infants and Toddlers)***

1. A rigorous definition of the term 'developmental delay'
2. Appropriate early intervention services based on scientifically based research, to the extent practicable, are available to all infants and toddlers with disabilities and their families, including Indian and homeless infants and toddlers
3. Timely and comprehensive multidisciplinary evaluation of needs of children and family-directed identification of the needs of each family
4. Individualized family service plan and service coordination
5. Comprehensive child find and referral system
6. Public awareness program including the preparation and dissemination of information to be given to parents, and disseminating such information to parents
7. Central directory of services, resources, and research and demonstration projects
8. Comprehensive system of personnel development, including the training of paraprofessionals and the training of primary referral sources
9. Policies and procedures to ensure that personnel are appropriately and adequately prepared and trained
10. Single line of authority in a lead agency designated or established by the governor for carrying out:
 - a. General administration and supervision
 - b. Identification and coordination of all available resources
 - c. Assignment of financial responsibility to the appropriate agencies
 - d. Development of procedures to ensure that services are provided in a timely manner pending resolution of any disputes
 - e. Resolution of intra- and interagency disputes
 - f. Development of formal interagency agreements
11. Policy pertaining to contracting or otherwise arranging for services
12. Procedure for securing timely reimbursement of funds
13. Procedural safeguards
14. System for compiling data on the early intervention system
15. State interagency coordinating council
16. Policies and procedures to ensure that to the maximum extent appropriate, early intervention services are provided in natural environments except when early intervention cannot be achieved satisfactorily in a natural environment

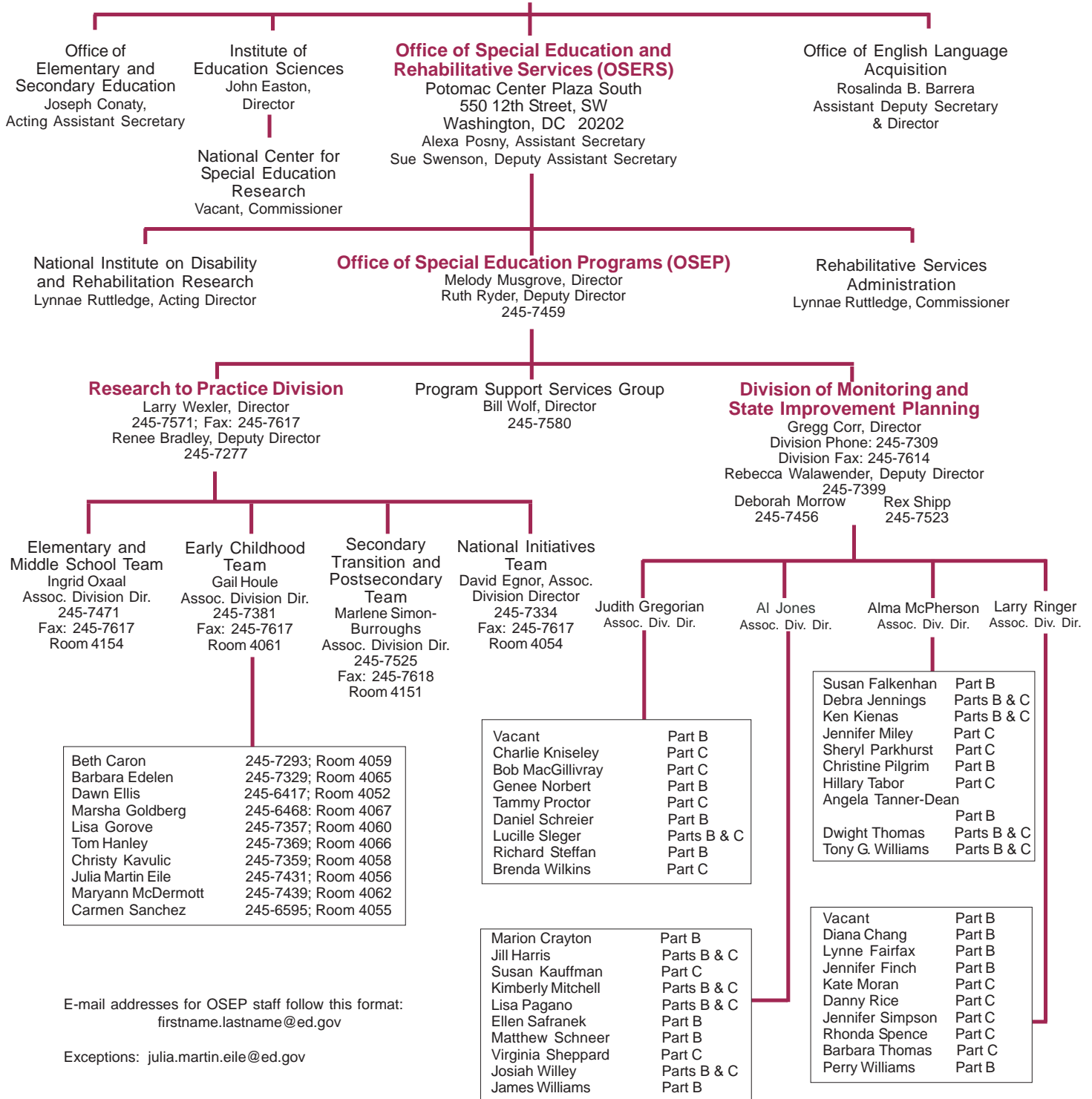
Note: Adapted from 20 U.S.C. §1435(a).

U.S. Department of Education Organization Chart - Abbreviated

As of November 1, 2011; Updates to this chart are available at <http://www.nectac.org/~pdfs/DOEorg.pdf>
All phone and fax numbers are in area code 202

U.S. Department of Education

400 Maryland Avenue SW
Washington, DC 20202
Arne Duncan, Secretary
Tony Miller, Deputy Secretary



Prepared by the National Early Childhood Technical Assistance Center

Part C Funding Cycles 1987-2011

Federal Fiscal Year	Part C Funds First Available to States	Deadline for Submission of Application to OSEP	Deadline for Federal Obligation of Funds	Deadline for State Obligation of Funds
1987	7/01/87	6/30/88	9/30/88	9/30/89
1988	7/01/88	6/30/89	9/30/89	9/30/90
1989	7/01/89	6/30/90	9/30/90	9/30/91
1990	7/01/90	6/30/91	9/30/91	9/30/92
1991	7/01/91	6/30/92	9/30/92	9/30/93
1992	7/01/92	6/30/93	9/30/93	9/30/94
1993	7/01/93	EP to FI: 5/02/94 ¹ FI 1-3 yr: 1/31/94 ²	9/30/94	9/30/95
1994	7/01/94	1/31/95	9/30/95	9/30/96
1995	7/01/95	5/31/95	9/30/96	9/30/97
1996	7/01/96	8/01/96	9/30/97	9/30/98
1997	7/01/97	6/15/97	9/30/98	9/30/99
1998	7/01/98	5/01/98	9/30/99	9/30/00
1999	7/01/99	4/23/99	9/30/00	9/30/01
2000	7/01/00	4/27/00	9/30/01	9/30/02
2001	7/01/01	4/16/01	9/30/02	9/30/03
2002	7/01/02	5/31/02	9/30/03	9/30/04
2003	7/01/03	5/23/03	9/30/04	9/30/05
2004	7/01/04	4/16/04	9/30/05	9/30/06
2005	7/01/05	5/02/05	9/30/06	9/30/07
2006	7/01/06	4/07/06	9/30/07	9/30/08
2007	7/01/07	4/20/07	9/30/07	9/30/08
2008	7/01/08	5/07/08	9/30/08	9/30/09
2009	7/01/09	5/18/09	9/30/09	9/30/10
2010	7/01/10	5/10/10	9/30/10	9/30/11
2011	7/01/11	5/10/11	9/30/11	9/30/12

Sources:

- 2009 - <http://www2.ed.gov/fund/grant/apply/osep/2009grantawardpackages/c09awardletter012809.pdf>
- 2010 - <http://www2.ed.gov/fund/grant/apply/osep/2010grantawardpackages/c10awardletter10-26-09.pdf>
- 2011 - <http://www2.ed.gov/fund/grant/apply/osep/2011grantawardpackages/cgrantmemo11-8-10.pdf>

¹ From Extended Participation (EP) to Full Implementation (FI)

² For states in Full Implementation, 1- to 3-year application

Part C Allocation to State and Jurisdictional Lead Agencies 1996-2012

State	FFY96	FFY97	FFY98	FFY99	FFY00	FFY01	FFY02	FFY03	FFY04
Alabama	\$4,483,470	4,451,153	5,026,654	5,401,820	5,442,925	5,567,271	6,063,339	6,313,728	\$6,363,564
Alaska	1,545,710	1,545,710	1,713,659	1,812,075	1,836,562	1,878,520	2,043,288	2,127,667	2,194,384
American Samoa	514,925	514,925	570,537	581,948	589,812	603,278	603,278	603,278	0
Arizona	5,306,409	5,281,199	5,964,019	6,790,748	7,163,113	7,326,758	7,868,896	8,193,846	8,968,449
Arkansas	2,549,297	2,643,862	2,985,693	3,224,319	3,300,402	3,375,801	3,716,598	3,870,077	3,875,003
Bureau of Indian Education	3,864,276	3,864,276	4,284,149	4,567,901	4,629,630	4,735,395	5,148,148	5,359,994	5,485,959
California	41,438,233	40,850,169	46,131,788	46,249,617	45,929,796	46,979,082	49,954,044	52,016,926	54,397,335
Colorado	3,972,753	4,069,358	4,595,495	5,125,020	5,377,332	5,500,179	6,132,874	6,386,135	6,879,317
Connecticut	3,378,163	3,378,163	3,775,344	3,831,379	3,992,165	4,083,368	4,478,645	4,663,593	4,590,942
Delaware	1,545,710	1,545,710	1,713,659	1,812,075	1,836,562	1,878,520	2,043,288	2,127,667	2,194,384
District of Columbia	1,545,710	1,545,710	1,713,659	1,812,075	1,836,562	1,878,520	2,043,288	2,127,667	2,194,384
Florida	14,722,619	14,722,619	16,118,402	17,360,485	17,645,688	18,048,811	19,235,683	20,030,031	22,122,203
Georgia	8,226,009	8,342,876	9,421,547	10,497,445	10,918,523	11,167,962	12,265,577	12,772,091	14,112,001
Guam	1,140,327	1,140,327	1,263,482	1,288,752	1,306,168	1,335,989	1,341,222	1,413,123	1,476,175
Hawaii	1,569,551	1,569,551	1,713,659	1,812,075	1,836,562	1,878,520	2,043,288	2,127,667	2,194,384
Idaho	1,545,710	1,545,710	1,713,659	1,812,075	1,836,562	1,878,520	2,043,288	2,127,667	2,194,384
Illinois	13,785,909	13,792,826	15,576,135	16,098,291	16,151,859	16,520,855	17,822,071	18,558,044	18,985,176
Indiana	6,065,530	6,177,116	6,975,771	7,501,701	7,655,126	7,830,010	8,666,617	9,024,511	8,978,177
Iowa	2,712,211	2,728,821	3,081,637	3,315,411	3,369,461	3,446,438	3,851,252	4,010,292	3,783,959
Kansas	2,716,195	2,734,507	3,088,058	3,335,406	3,433,291	3,511,726	3,884,393	4,044,802	3,963,641
Kentucky	3,876,538	3,889,895	4,392,829	4,795,769	4,812,022	4,921,954	5,461,452	5,686,986	5,381,815
Louisiana	5,023,051	4,898,566	5,531,914	5,747,605	5,894,220	6,028,876	6,549,059	6,819,506	6,935,492
Maine	1,545,710	1,545,710	1,713,659	1,812,075	1,836,562	1,878,520	2,043,288	2,127,667	2,194,384
Maryland	6,148,806	6,148,806	6,054,659	6,237,516	6,413,677	6,560,200	7,162,997	7,458,797	7,819,920
Massachusetts	8,621,533	8,621,533	7,826,512	8,115,297	7,269,022	7,435,086	8,078,494	8,412,100	8,208,226
Michigan	10,017,913	9,990,962	11,282,718	11,896,386	12,028,661	12,303,461	13,646,869	14,210,424	13,884,130
Minnesota	4,873,116	4,873,116	5,345,043	5,792,064	5,931,008	6,066,505	6,710,076	6,987,172	6,608,382
Mississippi	3,120,649	3,065,154	3,461,456	3,688,050	3,786,753	3,873,263	4,213,822	4,387,834	4,509,173
Missouri	\$5,422,619	5,465,155	6,171,758	6,630,914	6,722,152	6,875,722	7,568,706	7,881,260	\$7,732,502
Montana	1,545,710	1,545,710	1,713,659	1,812,075	1,836,562	1,878,520	2,043,288	2,127,667	2,194,384
Nebraska	1,689,626	1,719,997	1,942,380	2,098,289	2,120,927	2,169,380	2,400,219	2,499,338	2,503,659
Nevada	1,783,636	1,903,065	2,149,117	2,488,044	2,652,976	2,713,585	2,970,642	3,093,316	3,386,622
New Hampshire	1,545,710	1,545,710	1,713,659	1,812,075	1,836,562	1,878,520	2,043,288	2,127,667	2,194,384
New Jersey	8,497,315	8,527,086	9,629,574	9,865,491	9,965,995	10,193,673	11,405,544	11,876,542	11,927,921
New Mexico	2,045,597	2,022,495	2,283,988	2,415,047	2,442,953	2,498,764	2,682,058	2,792,815	2,801,758
New York	20,119,188	19,656,530	22,197,971	22,590,621	22,320,520	22,830,440	25,063,710	26,098,730	26,210,607
North Carolina	7,582,020	7,655,537	8,645,341	9,652,685	9,991,552	10,219,813	11,179,579	11,641,246	12,576,003
North Dakota	1,545,710	1,545,710	1,713,659	1,812,075	1,836,562	1,878,520	2,043,288	2,127,667	2,194,384
Northern Mariana Islands	342,733	342,733	379,748	387,343	392,577	401,540	462,815	462,815	462,815
Ohio	11,402,583	11,364,015	12,833,297	13,495,119	13,648,077	13,959,873	15,361,800	15,996,175	16,210,059
Oklahoma	3,381,056	3,394,025	3,832,847	4,236,413	4,398,814	4,499,306	4,901,951	5,104,380	5,031,692
Oregon	3,086,097	3,203,673	3,617,884	3,969,749	4,068,712	4,161,663	4,544,414	4,732,078	4,731,257
Palau *	78,014	52,039	26,004	-	-	-	-	-	-
Pennsylvania	12,702,122	12,702,122	12,737,869	12,889,526	13,016,152	13,313,512	14,662,818	15,268,327	14,897,574
Puerto Rico	4,549,818	4,609,319	5,205,269	5,560,061	5,782,773	5,914,883	5,986,306	6,233,513	5,928,149
Rhode Island	1,568,805	1,568,805	1,713,659	1,812,075	1,836,562	1,878,520	2,043,288	2,127,667	2,194,384
South Carolina	3,852,059	3,760,591	4,246,807	4,638,845	4,752,400	4,860,970	5,456,933	5,682,280	5,762,450
South Dakota	1,545,710	1,545,710	1,713,659	1,812,075	1,836,562	1,878,520	2,043,288	2,127,667	2,194,384
Tennessee	5,414,050	5,473,582	6,181,275	6,622,525	6,863,518	7,020,318	7,697,334	8,015,200	8,159,931
Texas	23,718,333	24,061,384	27,172,340	29,847,674	30,671,586	31,372,291	33,464,547	34,846,484	36,688,937
Utah	2,768,788	2,904,730	3,280,289	3,832,145	3,997,116	4,088,432	4,423,421	4,606,088	4,737,219
Vermont	1,545,710	1,545,710	1,713,659	1,812,075	1,836,562	1,878,520	2,043,288	2,127,667	2,194,384
Virgin Islands	671,647	671,647	744,185	759,069	769,327	786,891	786,891	786,891	786,891
Virginia	6,930,714	6,814,652	7,695,736	8,150,863	8,373,127	8,564,414	9,470,434	9,861,521	10,398,234
Washington	5,664,434	5,775,775	6,522,539	7,047,124	7,217,290	7,382,172	8,061,958	8,394,881	8,291,180
West Virginia	1,798,698	1,798,698	1,799,482	1,812,075	1,836,562	1,878,520	2,068,052	2,153,453	2,194,384
Wisconsin	5,553,755	5,553,755	5,672,891	6,010,473	6,078,934	6,217,810	6,961,718	7,249,206	7,086,825
Wyoming	1,545,710	1,545,710	1,713,659	1,812,075	1,836,562	1,878,520	2,043,288	2,127,667	2,194,384
Undistributed (Non-State)	-	-	-	-	-	-	-	-	-
US & Outlying Areas	315,754,000	315,754,000	350,000,000	370,000,000	375,000,000	383,567,000	417,000,000	434,159,500	444,362,700

Source: U.S. Department of Education, "Funds for State Formula-Allocated and Selected Student Aid Programs, by Program." These data were compiled for Web posting by the Budget Service on August 2, 2011. Note that amounts listed for FFY11 and FFY12 are preliminary estimates based on currently available data <http://www2.ed.gov/about/overview/budget/statetables/12stbbyprogram.pdf>

* As of FFY99, Palau is no longer eligible for Part C Funds.

Part C Allocation to State and Jurisdictional Lead Agencies 1996-2012

State	FFY05	FFY06	FFY07	FFY08	ARRA	FFY09	FFY10	FFY11	FFY12
AL	6,163,934	5,975,115	6,004,235	6,077,971	6,739,356	6,128,186	6,086,956	6,107,122	6,752,949
AK	2,160,317	2,138,714	2,138,714	2,135,315	2,398,294	2,152,956	2,152,956	2,150,225	2,379,404
AS	598,452	592,467	592,467	582,117	21,277	582,117	582,117	582,117	592,157
AZ	9,170,498	9,215,123	9,712,823	9,966,824	11,530,751	10,049,168	10,208,322	9,991,120	11,047,671
AR	3,875,214	3,774,372	3,890,674	3,957,948	4,459,793	3,990,648	3,997,458	3,970,368	4,390,232
BIE	5,442,075	5,387,653	5,387,654	5,378,442	0	5,623,320	5,623,320	5,290,875	5,864,533
CA	53,695,159	54,072,123	54,060,651	53,120,669	59,511,391	53,559,544	53,487,896	53,574,884	59,240,411
CO	6,924,449	6,906,967	6,842,998	6,935,430	7,954,827	6,992,730	7,070,900	7,030,214	7,773,655
CT	4,293,542	4,307,723	3,914,074	4,081,315	4,559,747	4,115,034	4,103,582	4,018,052	4,442,956
DE	2,160,317	2,138,714	2,138,714	2,135,315	2,398,294	2,152,956	2,152,956	2,150,225	2,379,404
DC	2,160,317	2,138,714	2,138,714	2,135,315	2,398,294	2,152,956	2,152,956	2,156,043	2,379,404
FL	22,136,190	22,138,291	22,723,694	23,028,291	24,291,623	23,218,548	22,474,556	22,547,415	24,934,321
GA	13,981,852	13,888,437	14,087,196	14,614,553	15,925,491	14,735,296	14,504,001	14,489,756	16,025,951
GU	1,464,366	1,449,722	1,449,722	1,424,395	52,064	1,424,395	1,424,395	1,424,395	1,448,962
HI	2,160,317	2,138,714	2,138,714	2,135,315	2,398,294	2,152,956	2,152,956	2,150,294	2,379,404
ID	2,160,317	2,138,714	2,300,134	2,354,608	2,689,423	2,374,062	2,395,268	2,440,740	2,694,056
IL	18,627,846	18,086,752	17,754,534	17,507,363	19,401,942	17,652,007	17,528,269	17,318,213	19,152,405
IN	8,790,996	8,641,192	8,677,149	8,549,840	9,717,801	8,620,477	8,674,872	8,608,058	9,519,834
IA	3,758,703	3,709,329	3,869,434	3,862,827	4,568,504	3,894,742	4,003,516	3,960,706	4,379,539
KS	3,930,552	3,867,324	3,893,499	3,863,905	4,625,010	3,895,828	4,030,759	4,019,084	4,443,609
KY	5,625,765	5,398,887	5,561,552	5,444,061	6,301,722	5,489,039	5,577,587	5,567,642	6,156,271
LA	6,854,659	6,643,788	6,073,273	5,789,506	6,931,250	5,837,338	6,040,146	6,403,256	7,081,638
ME	2,160,317	2,138,714	2,138,714	2,135,315	2,398,294	2,152,956	2,152,956	2,151,692	2,379,404
MD	7,622,142	7,632,067	7,378,419	7,489,632	22,216,990	7,551,511	7,278,159	7,400,012	8,182,488
MA	8,350,114	8,086,420	7,714,170	7,346,249	8,488,034	7,406,943	7,519,076	7,445,026	8,230,859
MI	13,245,161	13,048,084	12,657,902	12,320,224	13,312,456	12,422,012	12,173,620	11,852,205	13,107,182
MN	6,758,813	6,827,631	6,990,083	6,998,387	7,856,562	7,056,206	7,054,444	7,069,831	7,818,306
MS	4,435,250	4,247,850	4,241,050	4,371,673	4,871,669	4,407,791	4,389,623	4,372,987	4,834,318
MO	7,761,585	7,613,348	7,802,986	7,774,440	8,859,988	7,838,671	7,899,255	7,839,433	8,670,268
MT	2,160,317	2,138,714	2,138,714	2,135,315	2,398,294	2,152,956	2,152,956	2,150,355	2,379,404
NE	2,544,021	2,536,938	2,589,184	2,558,173	2,927,516	2,579,308	2,604,988	2,636,845	2,915,272
NV	3,391,593	3,404,659	3,720,986	3,892,934	4,383,658	3,925,097	3,930,434	3,937,463	4,354,410
NH	2,160,317	2,138,714	2,138,714	2,135,315	2,398,294	2,152,956	2,152,956	2,152,709	2,379,404
NJ	11,779,984	11,904,582	11,066,631	10,776,837	12,025,919	10,865,873	10,828,899	10,720,012	11,856,151
NM	2,765,784	2,727,201	2,854,734	2,896,598	9,086,348	2,920,529	2,916,751	2,950,479	3,255,892
NY	25,623,183	25,550,992	24,455,135	23,636,568	26,406,499	23,831,850	23,765,113	23,867,174	26,394,556
NC	12,331,953	12,081,093	12,295,027	12,703,744	14,506,562	12,808,700	12,921,410	12,890,890	14,257,504
ND	2,160,317	2,138,714	2,138,714	2,135,315	2,398,294	2,152,956	2,152,956	2,153,794	2,379,404
CNMI	459,112	454,521	454,521	446,581	16,323	446,581	446,581	446,581	454,283
OH	15,338,208	14,720,511	14,699,566	14,379,119	16,403,578	14,497,916	14,617,867	14,296,808	15,811,629
OK	5,131,948	4,992,412	5,126,448	5,261,101	5,907,674	5,304,567	5,303,920	5,301,454	5,862,230
OR	4,572,668	4,548,634	4,587,737	4,695,600	5,487,762	4,734,395	4,835,563	4,820,133	5,326,827
PW *	-	-	-	-	-	-	-	-	-
PA	14,505,534	14,607,252	14,475,632	14,235,768	16,117,921	14,353,382	14,414,366	14,395,986	15,922,237
PR	5,538,021	5,660,545	4,968,329	4,777,823	5,015,032	4,817,296	4,651,156	4,383,906	5,182,856
RI	2,160,317	2,138,714	2,138,714	2,135,315	2,398,294	2,152,956	2,152,956	2,151,325	2,379,404
SC	5,767,542	5,668,046	5,688,361	5,879,403	6,744,328	5,927,977	5,994,599	6,040,889	6,680,927
SD	2,160,317	2,138,714	2,138,714	2,135,315	2,398,294	2,152,956	2,152,956	2,151,959	2,379,404
TN	8,004,975	7,849,124	8,008,472	8,083,117	9,204,937	8,149,899	8,209,657	8,298,468	9,166,031
TX	38,419,189	37,890,634	38,785,179	39,335,134	44,454,366	39,660,114	39,790,124	39,962,532	44,199,456
UT	4,852,342	4,794,783	5,005,224	5,077,129	6,247,589	5,119,075	5,376,970	5,378,700	5,948,516
VT	2,160,317	2,138,714	2,138,714	2,135,315	2,398,294	2,152,956	2,152,956	2,152,548	2,379,404
VI	780,596	772,790	772,790	759,289	27,753	759,289	759,289	759,289	772,385
VA	10,280,066	10,127,614	10,279,887	10,243,859	11,377,635	10,328,493	10,268,024	10,343,853	11,438,259
WA	7,986,300	7,774,992	8,184,641	8,430,457	9,570,687	8,500,108	8,548,340	8,755,006	9,682,875
WV	2,160,317	2,138,714	2,138,714	2,135,315	2,398,294	2,152,956	2,152,956	2,151,649	2,379,404
WI	6,983,322	6,879,936	6,997,861	6,984,803	8,022,420	7,042,510	7,126,424	7,065,124	7,813,831
WY	2,160,317	2,138,714	2,138,714	2,135,315	2,398,294	2,152,956	2,152,956	2,150,225	2,379,404
UND	-	-	-	-	-	-	-	-	4,414,050
US & OA	440,808,096	436,399,920	436,400,000	435,653,802	500,000,000	439,427,000	439,427,000	438,548,146	489,427,000

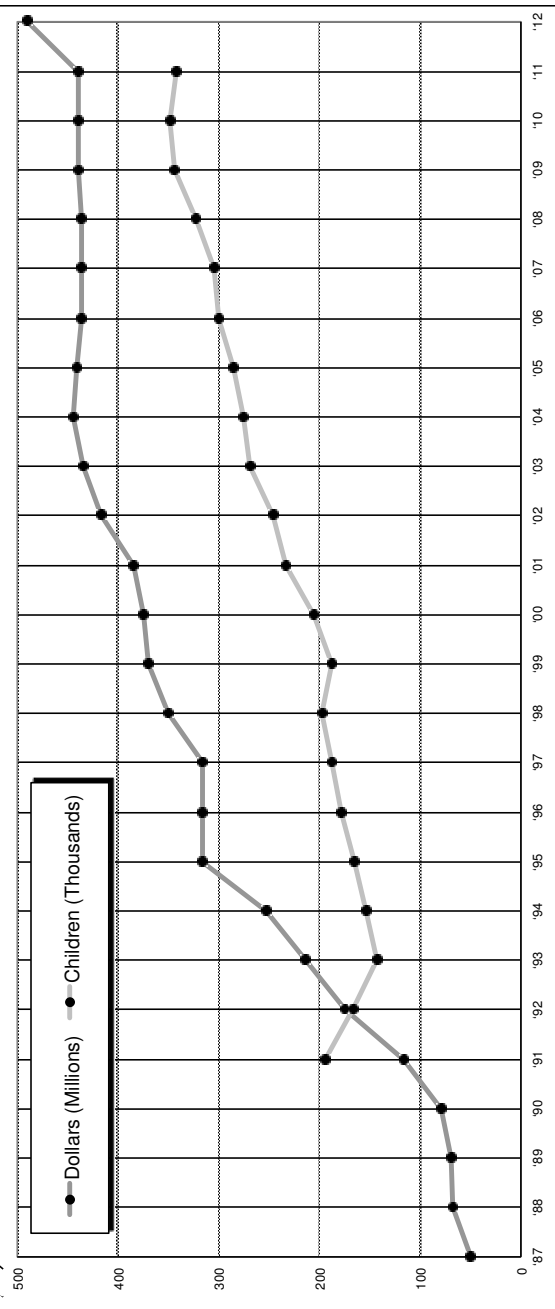
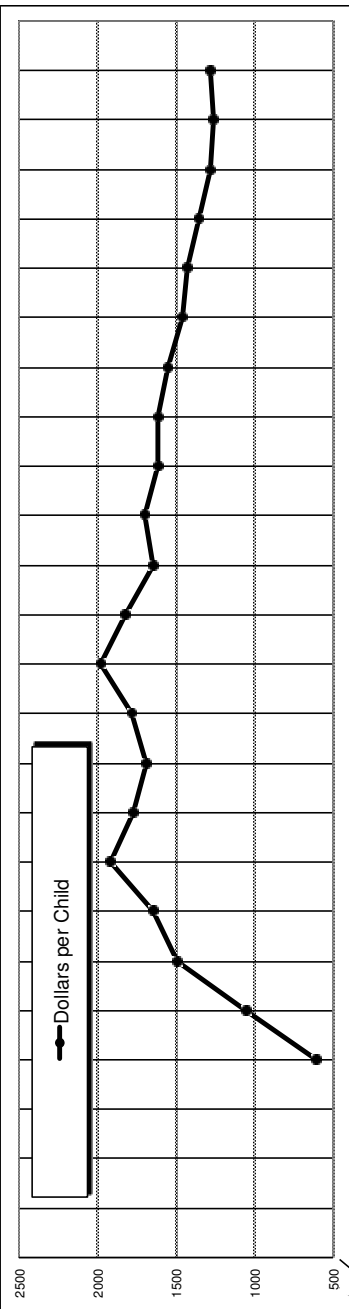
Source: U.S. Department of Education, "Funds for State Formula-Allocated and Selected Student Aid Programs, by Program." These data were compiled for Web posting by the Budget Service on August 2, 2011. Note that amounts listed for FFY11 and FFY12 are preliminary estimates based on currently available data <http://www2.ed.gov/about/overview/budget/statetables/12stbyprogram.pdf>

* As of FFY99, Palau is no longer eligible for Part C Funds.

Part C Infant and Toddler Program Federal Appropriations and National Child Count 1987-2012

updated September 29, 2011

FFY:	'87	'88	'89	'90	'91	'92	'93	'94	'95	'96	'97	'98	'99	'00	'01	'02	'03	'04	'05	'06	'07	'08	'09	'10	'11	'12
Dollars (Millions)	50	67	69	79	117	175	213	253	316	316	316	350	370	375	384	417	434	444	441	436	436	436	439	439	439	489
Children (Thousands)	194	167	143	154	165	178	187	187	197	187	206	233	246	269	275	285	299	305	322	343	343	343	349	343	343	N/A
Dollars per Child	603	1048	1490	1643	1915	1775	1690	1777	1979	1820	1648	1697	1615	1616	1550	1458	1428	1354	1280	1259	1281	1281	1259	1281	1281	N/A



Key

Dollars (Millions) appropriated for distribution to states
Sources: FFY 2010-2011: <http://www2.ed.gov/about/overview/budget/budget11/11action.pdf>
FFY 2012: <http://www2.ed.gov/about/overview/budget/budget12/12action.pdf> (Downloaded September 29, 2011)
Note: Allocations for fiscal year 2012 are preliminary estimates based on currently available data. Allocations based on new data may result in significant changes from these preliminary estimates.

Children (Thousands) with Individualized Family Service Plans (IFSPs) in the Fall of each federal fiscal year, U.S. & Outlying Areas.
Source: FFY 1991-1998: <http://www.nectac.org/~pdfs/pubs/partcupdate2010.pdf>
FFY 1998-2001: https://www.ideadata.org/TABLES31ST/AR_8-4.htm
FFY 2002-2011: https://www.ideadata.org/TABLES34TH/AR_8-4.xls (Downloaded September 28, 2011)
Notes: A single-day child count is used, which may underrepresent the actual number of children served that year. As of this update, Child Count data for Fall 2011 are not available.

Dollars per Child allocation of Part C dollars

FFY (Federal Fiscal Year): For example, in FFY 1991, 194,000 children were reported to be receiving services as of December 1, 1990.

Number of Children Served Under Part C of IDEA by Age and Percentage of Population Birth through Two Years 1990-2010

Child Count Year	Age 0 – 1 Served¹	Age 1 – 2 Served¹	Age 2 – 3 Served¹	# of Children Served¹	% of Population²
1990				194,363	1.77
1991				166,634 ³	1.41
1992				143,392 ³	1.18
1993				154,065	1.30
1994				165,253	1.41
1995	29,786	59,185	88,310	177,281	1.54
1996	31,496	60,233	94,798	186,527	1.65
1997	34,375	62,699	99,263	196,337	1.70
1998	31,089	60,558	95,708	187,355	1.62
1999	35,793	67,026	103,289	206,108	1.78
2000	36,570	74,256	121,984	232,810	2.00
2001	38,338	78,190	129,247	245,775	2.07
2002	41,657	84,315	142,763	268,735	2.23
2003	39,205	86,989	148,553	274,747	2.25
2004	40,905	90,832	152,799	284,536	2.32
2005	42,190	95,724	161,128	299,042	2.41
2006	43,370	97,093	164,929	305,392	2.44
2007	45,371	102,798	173,756	321,925	2.54
2008	45,272	109,555	188,158	342,985	2.65
2009	44,341	111,461	192,802	348,604	2.67
2010	41,069	106,913	194,839	342,821	--

¹ Number of infants and toddlers (*in U.S. and outlying areas*) receiving early intervention services under Part C (and Chapter 1 for 1986 through 1993 only), as of December 1 of the calendar year. The child count date is a state-designated date between October 1 and December 1 of the reporting year. To convert to Federal Fiscal Year, add 1. For example, the child count shown for 2009 would be for FFY 2010.

Source for 1990 through 1997: Danaher, J., Goode, S., & Lazara, A. (Eds.). (2010). *Part C updates*. Chapel Hill, NC: National Early Childhood Technical Assistance Center -<http://www.nectac.org/~pdfs/pubs/partcupdate2010.pdf> (page 9)

Source for 1998-2003: https://www.ideadata.org/tables31st/ar_8-4.htm (retrieved August 10, 2011)

Source for 2004-2009: https://www.ideadata.org/DACAnalyticTool/Intro_2.asp (retrieved August 10, 2011)

Source for 2010: <https://www.ideadata.org/csvdata/cchildcount2010.csv> (retrieved September 27, 2011).

² Percentage of infants and toddlers (*in 50 states and DC*) receiving early intervention services under Part C (and Chapter 1 for 1986-1993 only) as of December 1 of the calendar year. Percentage is calculated by dividing the total number of children served by the total population. For example, as of December 1, 2009, 2.67% of all children birth through two were reported to be receiving early intervention services.

Source for 1990 through 2003: Danaher, J., Goode, S., & Lazara, A. (Eds.). (2010). *Part C updates*. Chapel Hill, NC: National Early Childhood Technical Assistance Center - <http://www.nectac.org/~pdfs/pubs/partcupdate2010.pdf> (page 9)

Source for 2004-2009: https://www.ideadata.org/DACAnalyticTool/Intro_2.asp (retrieved September 27, 2011).

Please note: The percentage of total population for 2010 was not yet available at the time of this compilation.

³ A combination of factors appears to account for the apparent decline in these child counts:

- early inaccuracies, including duplicated counts in state data collection systems;
- inclusion in earlier years of children who only received some services and who did not necessarily have IFSPs; and
- in the count for 1992, the decline in the reported number of children served in several large states masked the reports from 39 other jurisdictions of increases in the number of children served.

**Percentage of Infants and Toddlers
Served Under Part C of IDEA
by Age Cohort
U.S. and Outlying Areas
2004-2010**

Child Count Year	Age 0 - 1	Age 1 - 2	Age 2 - 3	Age 0 - 3
2004	14.38	31.92	53.70	100.00
2005	14.11	32.01	53.88	100.00
2006	14.20	31.79	54.01	100.00
2007	14.09	31.93	53.97	100.00
2008	13.20	31.94	54.86	100.00
2009	12.72	31.97	55.31	100.00
2010	11.98	31.19	56.83	100.00

Source for 2004-2009: Analytic Tool at https://www.ideadata.org/DACAnalyticTool/Intro_2.asp, accessed August 10, 2011.

Source for 2010: <https://www.ideadata.org/csvdata/cchildcount2010.csv> (retrieved September 27, 2011)

Note: Percentages may not add up to 100 due to rounding.

**Number and Percentage
of At-risk Infants and Toddlers
Served Under Part C of IDEA
2004-2010**

State	Number						
	2004	2005	2006	2007	2008	2009	2010
California	2,112	2,351	2,527	2,555	2,748	2,563	--
Hawaii	1,547	1,322	1,764	1,780	1,484	--	--
Indiana	671	528	234	--	--	--	--
Massachusetts	591	616	590	504	503	483	431
New Hampshire	--	9	11	5	5	7	5
New Mexico	941	1,006	931	1,054	1,542	1,433	862
North Carolina	1,027	1,199	1,054	212	78	--	
West Virginia	250	378	449	481	153	153	137
Guam	11	9	12	17	11	8	7

State	Percentage ¹						
	2004	2005	2006	2007	2008	2009	2010
California	0.13	0.15	0.16	0.16	0.17	--	--
Hawaii	2.99	2.54	3.37	3.37	2.76	--	--
Indiana	0.26	0.20	0.09	N/A	N/A	--	--
Massachusetts	0.25	0.27	0.26	0.22	0.22	--	--
New Hampshire	N/A	0.02	0.02	0.01	0.01	--	--
New Mexico	1.12	1.18	1.07	1.18	1.71	--	--
North Carolina	0.29	0.33	0.28	0.05	0.02	--	--
West Virginia	0.40	0.60	0.71	0.77	0.24	--	--

Source for 2004-2008: Analytic Tool at https://www.ideadata.org/DACAnalyticTool/Intro_2.asp (retrieved August 10, 2011).

Source for 2009-2010: <https://www.ideadata.org/PartCChildCount.asp> (retrieved September 27, 2011).

¹Percentage = At-risk infants and toddlers (age 0 to 3) served divided by population of infants and toddlers (age 0 to 3), multiplied by 100.

Note: The percentage of population for 2009 and 2010 was not available at the time of this compilation.

**Number and Percentage
of Infants and Toddlers Ages Birth through 2 Years
Served Under Part C of IDEA
by Early Intervention Setting
U.S. and Outlying Areas
2004-2010**

Primary Early Intervention Setting	Number						
	2004	2005	2006	2007	2008	2009	2010
Home	235,190	248,035	260,186	275,272	295,387	302,311	299,704
Community-Based Settings ^{2,3}	-	-	16,207	17,549	19,677	22,926	22,857
Other Setting ^{2,4}	-	-	28,987	29,104	27,921	23,367	20,260
Total Settings	284,170	299,051	305,380	321,925	342,985	348,604	342,821

Primary Early Intervention Setting	Percentage ¹						
	2004	2005	2006	2007	2008	2009	2010
Home	82.76	82.94	85.20	85.63	86.12	86.72	87.42
Community-Based Settings ^{2,3}	.	.	5.31	5.37	5.74	6.58	6.67
Other Setting ^{2,4}	.	.	9.49	8.99	8.14	6.70	5.91
Total Settings	100.0	100.0	100.0	100.0	100.0	100.0	100.0

Source for 2004-2009: Analytic Tool at https://www.ideadata.org/DACAnalyticTool/Intro_2.asp (retrieved August 15, 2011).

Source for 2010: <https://www.ideadata.org/PartCSettings.asp> (retrieved September 27, 2011).

¹ Percentage = Number of children reported according to primary early intervention setting category divided by the total number of children reported, multiplied by 100. Totals may not sum to 100 percent due to rounding.

² The data categories of community-based settings and other setting were implemented with the 2006 data collection, therefore data is not available for years 2004 and 2005.

³ Community-based Setting. Unduplicated count of children whose early intervention services are provided primarily in a setting where children without disabilities typically are found. These settings include but are not limited to child care centers (including family day care), preschools, regular nursery schools, early childhood centers, libraries, grocery stores, parks, restaurants, and community centers (e.g., YMCA, Boys and Girls Clubs).

⁴ Other Setting. Unduplicated count of children whose early intervention services are provided primarily in a setting that is not home or community-based. These settings include, but are not limited to, services provided in a hospital, residential facility, clinic, and EI center/class for children with disabilities.

- Data not available.

. Percentage cannot be calculated. The sum of percentages may not equal 100 due to rounding.

**Part B Eligibility Status of Children Exiting Part C Services
as of Their Third Birthday
U.S. and Outlying Areas
2004-2009**

Exit Code	2004	2005	2006	2007	2008	2009
Completion of IFSP prior to maximum age	14.96%	14.87%	15.01%	14.49%	14.77%	14.52%
Part B eligible	42.24%	41.00%	39.41%	39.45%	39.03%	39.42%
Part B eligible, continuing in Part C	-	-	2.44%	2.00%	2.21%	1.35%
Not eligible Part B – Exit with referral to other program	7.14%	7.21%	6.96%	7.27%	7.54%	7.58%
Not eligible Part B – Exit with no referrals	3.54%	3.63%	3.40%	3.02%	3.31%	4.20%
Part B eligibility not determined	8.63%	10.67%	10.08%	11.19%	10.77%	11.19%
Deceased	0.62%	0.57%	0.54%	0.51%	0.47%	0.43%
Moved out of state	3.83%	3.85%	3.83%	3.99%	3.91%	3.66%
Withdrawal by parent	10.91%	10.30%	10.45%	10.32%	10.51%	10.39%
Attempts to contact unsuccessful	8.12%	7.91%	7.87%	7.77%	7.48%	7.26%
TOTAL NUMBER EXITING	100.00%	100.00%	100.00%	100.00%	100.00%	100.00%

Source for 2004-2008: Analytic Tool at https://www.ideadata.org/DACAnalyticTool/Intro_2.asp (retrieved August 10, 2011).

Source for 2009: https://www.ideadata.org/TABLES34TH/AR_8-7.xls (retrieved September 27, 2011).

Percent = Number of infants and toddlers in the exit reason column divided by the total number of infants and toddlers exiting the program, multiplied by 100.

Part C Data Tables and Forms

The Data Accountability Center (<https://www.ideadata.org/default.asp>) provides public access to data about children and youth with disabilities served under the Individuals with Disabilities Education Act (IDEA) - Parts B and C; technical assistance (TA) materials to support the collection, analysis and reporting of IDEA data; and the forms and spreadsheets used for collection.

The Part C Data Tables and Notes are available at <https://www.ideadata.org/PartCData.asp>

IDEA 618 Data Tables

Child Count (2004)(2005)(2006)(2007)(2008) (2009) (2010)
 Program Settings(2004)(2005 and 2006)(2007)(2008) (2009) (2010)
 Exiting(2004-05)(2005-06)(2006-07)(2007-08) (2008-09) (2009-10)
 Early Intervention Services(2002)(2003)(2004)
 Personnel(2002)
 Dispute Resolution(2006-07)(2007-08) (2008-09) (2009-10)

Data Notes

Part C DRAFT Data Notes 2009-10 Reporting Year and Fall 2010
 Part C Data Notes 2008-09 Reporting Year and Fall 2009
 Part C Data Notes 2007-08 Reporting Year and Fall 2008
 Part C Data Notes 2006-07 Reporting Year and Fall 2007
 Part C Data Notes 2005-06 Reporting Year and Fall 2006
 Part C Data Notes 2004-05 Reporting Year and Fall 2005

The Part C Data Collection Forms 2010-11 Reporting Year are available at <https://www.ideadata.org/PartCForms.asp#y201011>

Data for SPP/APR due February 1, 2012

Data Collection Forms	Date Due	SPP/APR Indicator(s)
Child Count, Table 1 -- Specific State-Designated Date between October 1 and December 1 of 2010	February 2, 2011	C5 & C6
Program Settings, Table 2 -- Child Count Date for 2010	February 2, 2011	C2
Exiting, Table 3 -- 2010-11 Reporting Year	November 2, 2011	Not used for specific SPP/APR indicator
Dispute Resolution, Table 4 -- July 1, 2010 - June 30, 2011	November 2, 2011	C10, C11, C12, & C13

Section II:

Part C Program Implementation Resources

Federal Regulations for Part C of the IDEA.....	17
States' Part C Rules, Regulations and Policies.....	18
OSEP Policy Letters of Clarification Related to Part C of the IDEA	24
Selected Online Publications and Journal Articles	
Related to the Implementation of Part C 2010-2011	33

Federal Regulations for Part C of the IDEA

updated October 17, 2011

available at <http://www.nectac.org/partc/303regs.asp>

The final Federal Regulations for Part C of IDEA 2004 (34 CFR Part 303), governing the Early Intervention Program for Infants and Toddlers with Disabilities, were published in the Federal Register on September 28, 2011. These regulations are effective on October 28, 2011.

- An **HTML version of the regulations** with targeted links is available at: <http://federalregister.gov/a/2011-22783>
- A **PDF version** is available as well at: <http://www.gpo.gov/fdsys/pkg/FR-2011-09-28/pdf/2011-22783.pdf>

Suggested Schedule - A suggested schedule (working draft 9/23/2011) from the U.S. Department of Education, Office of Special Education Programs (OSEP) for State Part C Coordinators implementing the new Part C Regulations is available at:

http://www.nectac.org/~docs/idea/New%20Regs_Suggested_Schedule_%209_23%20_11.doc

Former Part C Regulations (1999) - For purposes of comparison, the former Part C Regulations (1999) can be accessed on our website at the following URL: http://www.nectac.org/partc/303regs_1999.asp

Side-by-Side Comparisons

- Side-by-Side Comparison of the 2011 Final Part C Regulations to the 1999 Regulations (2011), developed by the Council for Exceptional Children (CEC), its Division for Early Childhood (DEC), and the IDEA Infant Toddler Coordinators Association (ITCA). The full text, as well as links to subparts by chapter, can be access at: http://dec-sped.org/PolicyAdvocacy/IDEA_Part_C_Changes
- Topical Side-by-Sides (2011) of the final 2011 and 1999 Part C regulations are being developed by ITCA. These are being published online as they become available at: <http://www.ideainfanttoddler.org/regulations.htm>

OSEP's Part C of the IDEA Website

The U.S. Department of Education, Office of Special Education Program (OSEP) will be providing additional information about the regulations and upcoming training opportunities on the Part C of the IDEA website, located at the following URL: <http://idea.ed.gov/part-c/search/new>

Some resources on the site include:

- **Video of Major Changes** - A 20 minute video featuring Alexa Posny, Assistant Secretary of the U.S. Department of Education's Office of Special Education and Rehabilitative Services (OSERS), highlights some of the major changes to the regulations. Available at: <http://www.youtube.com/watch?v=w4dwwRIumSA>
- **November 16, 2011 Training Opportunity** - An all day training opportunity, *Overview and Discussion of 2011 Part C Regulations: Information, Implementation and Implications*, will take place on November 16, 2011, at the Gaylord National Hotel & Convention Center, located at 201 Waterfront Street, National Harbor, MD 20745. The event is free of charge and will be webcast for those unable to attend. Available at: <http://osep-part-c.tadnet.org/home>
- **Q&A Corner** - Individuals can submit questions about the new regulations online. Each question will not receive an individual response, however the questions submitted will be used to develop future guidance on the implementation of the Part C final regulations. Questions may be submitted at the following URL: http://idea.ed.gov/part-c/qanda_corner/new
- **Official Announcement** - The official announcement of the release of the Part C regulations by U.S. Department of Education Secretary Arne Duncan on September 6, 2011. Available at: <http://www.ed.gov/news/press-releases/education-department-announces-regulations-improve-outcomes-infants-and-toddlers>

State Part C Rules, Regulations and Policies

updated October 11, 2011

available at <http://www.nectac.org/partc/statepolicies.asp>

Alabama

- AEIS Handbook: Services For Alabama's Children With Disabilities, Ages Birth through 5 (revised 2002)
 - <http://www.nectac.org/shortURL.asp?sURL=AL-EIhandbook>
- Additional guidance documents (various dates)
 - http://www.nectac.org/shorturl.asp?sURL=AL_partCguidance

Arizona

- AzEIP Policies and Procedures (September 2010)
 - <https://www.azdes.gov/main.aspx?menu=98&id=2384>
- Technical Assistance Guidance Documents (various dates)
 - <https://www.azdes.gov/main.aspx?menu=98&id=3036>

California

- Title 14, CA Early Intervention Services Act (1998) and Title 17 Regulations: Chapter 2, Early Intervention Services (amended March 19, 2011)
 - http://www.dds.ca.gov/EarlyStart/Statutes_Regs.cfm
- Proposed Policy Changes - Early Start Eligibility and Use of Private Insurance (2009)
 - <http://www.dds.ca.gov/EarlyStart/ESBudget.cfm>
 - See also, a searchable database of CA Special Education Laws (2011)
 - <http://www.cde.ca.gov/sp/se/lr/>

Colorado

- Early Intervention Colorado State Plan (2010)
 - <http://www.eicolorado.org/Files/2010%20State%20Plan%20with%20Appendices.pdf>
- CO Early Intervention Legislation (various dates)
 - <http://www.eicolorado.org/index.cfm?fuseaction=Documents.content&linkid=522>
- Policies and Procedures for Colorado's Early Intervention System (various dates)
 - <http://www.eicolorado.org/index.cfm?fuseaction=Policies.main>
- State Forms, Instruction Manuals, and Processes (various dates)
 - <http://www.eicolorado.org/index.cfm?fuseaction=Documents.content&linkid=591>

Connecticut

- General Statutes, Sec. 17a-248 (effective October 2010) and Birth-to-Three Program Regulations (ca. 2009)
 - <http://www.birth23.org/AboutB23/LawsnRegs.html>
- Birth-to-Three Program Procedures, Service Guidelines, and more (various dates)
 - <http://www.birth23.org/providers/providers.html>

Delaware

- Child Development Watch Policy Manual (2004)
 - http://www.dhss.delaware.gov/dhss/dms/epqc/birth3/files/cdw_policymanual.pdf
- Various guidance documents, including: Definitions for Eligible Infants and Toddlers to be Served (2006); Building Blocks Guidelines (2007); Guide to Promoting Inclusion in Early Care and Education (2007); Infant and Toddler Early Learning Foundations (2007); and more - (**scan down the page**)
 - <http://www.dhss.delaware.gov/dhss/dms/birth3pubs.html>

Florida

- Early Steps Policy Handbook and Operations Guide (effective October 1, 2011)
 - http://www.cms-kids.com/home/resources/es_policy_1011/es_policy.html

Georgia

- Program standards on Comprehensive Child Find System, Service Coordination, Service Delivery, Evaluation and Assessment, and Individualized Family Service Plan (revised May 2009)
 - <http://health.state.ga.us/programs/bcw/standards.asp>

Hawaii

- Hawaii's Revised Statutes that Implement Part C, IDEA (1998)
 - <http://www.hawaii.gov/health/family-child-health/eis/regulations.html>
- Hawaii's State EI Plan (effective May 15, 2009)
 - <http://hawaii.gov/health/family-child-health/family-child-health/eis/pdf/State%20EI%20Plan%20rev%20%205-15-09%20final.pdf>

Idaho

- Idaho Code: Title 16, Chapter 1: Early Intervention Services (no date found)
 - <http://legislature.idaho.gov/idstat/Title16/T16CH1.htm>
- Idaho Infant Toddler Program eManual (updated April 2009)
 - http://www.healthandwelfare.idaho.gov/Portals/_Rainbow/Manuals/FACS/ITP_eManual/Idaho_Infant_Toddler_Program_eManual.htm

Illinois

- Child and Family Connections Procedure Manual (July 2007)
 - <http://www.dhs.state.il.us/page.aspx?item=31212>
- IL Early Intervention Laws and Rules (amended June 8, 2009)
 - <http://www.ilga.gov/commission/jcar/admincode/089/08900500sections.html>

Indiana

- First Steps Final Rule (2005)
 - <http://www.in.gov/fssa/files/fs05-201proposedrulef.pdf>
- Senate Enrolled Act No. 112, Article 12.7. Child Development Services, Chapter 2. Infants and Toddlers With Disabilities Program (2006)
 - <http://www.in.gov/legislative/bills/2006/PDF/SE/SE0112.1.pdf>
- Indiana First Steps Early Intervention Personnel Guide (revised October 2010)
 - http://www.in.gov/fssa/files/First_Steps_Personnel_GuideRevised_Final_Oct.2010.pdf
- Best Practices in Early Intervention (2006)
 - http://www.in.gov/fssa/files/BestPractice_July_2006.pdf
- Eligibility Determination Team Manual (2006)
 - http://www.in.gov/fssa/files/ED_Team_Manual_Final_Version_11-06.pdf
- Additional policy information for First Steps Program (various dates)
 - <http://www.in.gov/fssa/ddrs/3399.htm>

Iowa

- Iowa 2006 Part C Policies and Assurances Document (2006)
 - http://educateiowa.gov/index.php?option=com_docman&task=doc_download&gid=10788&Itemid=1507
- Iowa Administrative Rules of Early ACCESS: Integrated System of Early Intervention Services (2003)
 - http://educateiowa.gov/index.php?option=com_docman&task=doc_download&gid=1925
- Iowa Part C Eligibility Document (2008)
 - http://educateiowa.gov/index.php?option=com_docman&task=doc_download&gid=5960

Kansas

- Kansas IDEA Part C Procedure Manual (July 2009)
 - http://www.ksits.org/part_c_manual.htm
- Kansas Administrative Regulations for Infant and Toddler Services (1997)
 - <http://www.kdheks.gov/its/kar28-4-550to572.html>
- Various KITS Technical Assistance Packets (**scan down the page**)
 - <http://www.ksits.org/professionals.htm>

Kentucky

- First Steps Program Policy and Procedures Manual (July 2011), Forms (2011) and Regulations (effective February 2011)
 - <http://chfs.ky.gov/dph/pptablecontents.htm>

Louisiana

- Early Steps Manual and Forms (July 2010)
 - <http://new.dhh.louisiana.gov/index.cfm/newsroom/detail/1481?uuid=1296859139925>

Maine

- Chapter 101 Regulations - Maine Unified Special Education Regulation Birth to Age Twenty (effective July 2, 2011)
 - <http://www.maine.gov/education/speced/rules/index.html>
- Administrative Letters (various dates)
 - <http://www.maine.gov/education/speced/cds/adminlett.html>
- Guidance Document - Early Intervention Process for Infants, Toddlers and Their Families: Eligibility Determination, IFSP Development, Intervention Planning (2007)
 - http://www.nectac.org/~pdfs/topics/families/ME_Guide_1_17_07Final.pdf
- Maine's standardized forms are at:
 - <http://www.maine.gov/education/speced/cds/forms/index.html>
 - See also, Maine Part C Process (DRAFT 2009)
 - <http://www.maine.gov/education/speced/cds/documents/PartCProcessChart.doc>

Maryland

- Maryland State Regulations for Early Intervention Provisions (amended October 5, 2009)
 - http://www.dsd.state.md.us/comar/SubtitleSearch.aspx?search=13A.13.01.*
- Maryland's Extended IFSP Option-Policies and Procedures (final October 2009)
 - <http://www.marylandpublicschools.org/NR/rdonlyres/006F42DF-A21C-40CB-B46E-04105BFB9850/22092/MDExtendedIFSPOptionPPEffectiveJuly12009updated103.pdf>
 - See also, Proposed Amendments MD Extended IFSP Option Policies & Procedures (August 2011)
 - <http://www.marylandpublicschools.org/NR/rdonlyres/E94CADE8-6143-4300-A2B8-7FDF00E709EC/29649/PoliciesandProcedures82311.pdf>

Massachusetts

- Massachusetts Early Intervention Operational Standards (2006) and other guidance documents (various dates)
 - http://www.nectac.org/shortURL.asp?sURL=MA_PartC_standards
- Policy Updates (various dates)
 - http://www.nectac.org/shortURL.asp?sURL=MA_PartC_policy

Michigan

- Michigan Administrative Rules for Special Education Supplemented with IDEA Federal Regulations (April 2009)
 - <http://eotta.ccesa.org/Files/PDF/MARSE-April09.pdf>
- Early On Reference Bulletins - Eligibility Determination, Natural Environments, CAPTA Referrals and more (various dates)
 - <http://eotta.ccesa.org/Resources.php?ID=11>
 - See also, other Early On State Resources
 - <http://eotta.ccesa.org/Resources.php?ID=2>

Minnesota

- Minnesota State Statutes, Early Intervention Services (Disabilities) (2006)
 - http://www.nectac.org/shortURL.asp?sURL=MN_ei_statute
- Eligibility is under Minnesota Rules, Chapter 3525.1350: Infant and Toddler Intervention Services (posted October 12, 2007)
 - <https://www.revisor.mn.gov/rules/?id=3525.1350>

Missouri

- Missouri State Plan for Special Education: Regulations Implementing Part C of the IDEA First Steps Program (revised January 2011; proposed, August 2011)
 - <http://www.dese.mo.gov/divspeced/stateplan/index.html>
- Early Intervention Practice Manual (September 2010)
 - <http://dese.mo.gov/divspeced/FirstSteps/EISpracmanual.html>
- Other guidance documents for Part C of IDEA (various dates)
 - <http://dese.mo.gov/divspeced/FirstSteps/RulesRegs.html>
- First Steps Eligibility Procedures and Q&A (January 2009)
 - <http://www.dese.mo.gov/divspeced/FirstSteps/eligibilitycriteria.html>

Nebraska

- Nebraska Administrative Code, Title 92, Chapter 51 - Regulations and Standards for Special Education Programs (revised May 15, 2010)
 - http://www.education.ne.gov/legal/webrulespdf/CLEAN51_2010.pdf
- Verification Guidelines for Children with Disabilities - Technical Assistance Document (2008) and Videos (2009)
 - <http://edn.ne.gov/verification.html>
- Early Intervention Services Coordination (2000)
 - <http://edn.ne.gov/pdf/Chapter-10.pdf>

Nevada

- NV Effective Practice Guidelines and other Policy Documents (various dates)
 - http://health.nv.gov/BEIS_Publications.htm

New Hampshire

- NH Code of Administrative Rules - Developmental Services, Part He-M 510, Family-Centered Early Supports and Services (effective November 11, 2009) (**scan down the page to Part He-M 510**)
 - http://www.gencourt.state.nh.us/rules/state_agencies/he-m500.html
- NH orientation materials for service coordinators (various dates)
 - <http://www.dhhs.nh.gov/dcbcs/bds/earlysupport/orientation.htm>

New Jersey

- New Jersey Administrative Code, Title 8, Chapter 17, Early Intervention System (effective October 6, 2008) and related Policies and Procedures (various dates), including Eligibility Criteria (NJEIS-02, March 2010)
 - <http://nj.gov/health/fhs/eis/policies.shtml>
- N.J. Part C State Plan (updated 2004)
 - <http://nj.gov/health/fhs/eis/partc.shtml>

New Mexico

- NM Rules and Regulations, including FIT Program Regulations (2001), State Incentive Grant (Extended Part C Option) Policy and Procedures (2009) and more.
 - http://www.nmhealth.org/ddsd/NMFIT/Documents/FIT_Rules.htm#Section1
 - See also, Technical Assistance Documents (various dates)
 - http://www.nmhealth.org/ddsd/NMFIT/Documents/FIT_TA.htm#Section1

New York

- Subpart 69-4: Regulations for the Early Intervention Program (June 3, 2010)
 - <http://w3.health.state.ny.us/dbspace/NYCRR10.nsf/56cf2e25d626f9f785256538006c3ed7/8525652c00680c3e852565a1005e2864?OpenDocument>
- Additional Early Intervention Program Regulations and Laws (various dates)
 - http://www.health.state.ny.us/community/infants_children/early_intervention/regulations.htm
- Early Intervention Program Memoranda, Guidance and Clinical Practice Guidelines (various dates)
 - http://www.health.state.ny.us/community/infants_children/early_intervention/memoranda.htm

North Carolina

- NC Infant Toddler Program Manual (2005) and other guidance documents and forms (various dates) (**scan down the page**)
 - <http://www.bearly.nc.gov/index.php/resources/publications>

North Dakota

- ND Early Intervention State Guidelines (various dates)
 - <http://www.nd.gov/dhs/services/disabilities/earlyintervention/stateguidelines.html>

Ohio

- Ohio Administrative Code: Chapter 3701-8, Help Me Grow Program (effective July 16, 2010)
 - <http://www.odh.ohio.gov/rules/final/fr3701-8.aspx>
- Ohio Help Me Grow Policies (various dates)
 - <http://www.ohiohelpmegrow.org/professional/laws/policies.aspx>

Oklahoma

- SoonerStart Early Intervention Policies and Procedures (October 2010)
 - http://sde.state.ok.us/Curriculum/SpecEd/pdf/SoonerStart/Publications/EI_Manual.pdf
- SoonerStart publications (various dates), including an Assistive Technology Guide (2008) and a Transition Guide (2005)
 - http://sde.state.ok.us/Curriculum/SpecEd/SoonerStart_Publications.html

Oregon

- Early Intervention/Early Childhood Special Education Policy/Procedure Manual (revised November 2003) and Program Operation Guidelines (various dates)
 - <http://www.ode.state.or.us/search/page?id=1692>

Pennsylvania

- An Early Education Provider's Guide to Early Intervention in Pennsylvania (2009)
 - http://www.nectac.org/shortURL.asp?sURL=PA_PartC_manual
- The Pennsylvania Code: Chapter 4226. Early Intervention Services (2003)
 - <http://www.pacode.com/secure/data/055/chapter4226/chap4226toc.html>
 - See also, *Announcements, which include guidance documents (various dates)*
 - http://www.portal.state.pa.us/portal/server.pt/community/early_intervention/8710/announcements/522283

Rhode Island

- Early Intervention Resources, References and Forms (various dates)
 - <http://www.dhs.ri.gov/ForProvidersVendors/EIPProviders/tabid/772/Default.aspx>

South Carolina

- South Carolina Policy Manual (October 4, 2011) and related forms
 - <http://www.scfirststeps.org/BNpolicyandprocedures.html>

South Dakota

- Administrative Rules: Article 24:14 - Early Intervention Program (effective October 22, 2008)
 - <http://legis.state.sd.us/rules/DisplayRule.aspx?Rule=24:14>
 - See also, *Service Coordinator/Provider documents and forms (various dates)*
 - http://doe.sd.gov/oess/Birthto3_servcoord.asp

Tennessee

- Rules of State Board Of Education, Chapter 0520-1-10, Tennessee's Early Intervention System (October 2003)
 - <http://www.state.tn.us/sos/rules/0520/0520-01/0520-01-10.pdf>
- Eligibility information is also available
 - <http://www.state.tn.us/education/teis/eligibility.shtml>

Texas

- Texas Administrative Code, Title 40, Chapter 108, Early Childhood Intervention Services (effective September 1, 2011)
 - [http://info.sos.state.tx.us/pls/pub/readtac\\$ext.ViewTAC?tac_view=4&ti=40&pt=2&ch=108](http://info.sos.state.tx.us/pls/pub/readtac$ext.ViewTAC?tac_view=4&ti=40&pt=2&ch=108)
 - See also, *related state rules (Section 3-C)*
 - <http://www.dars.state.tx.us/rules/index.shtml#eci>

Utah

- Utah Administrative Rule R398-20, Early Intervention (as in effect on June 1, 2011)
 - <http://www.rules.utah.gov/publicat/code/r398/r398-020.htm>
 - See also, *Utah's Part C State Plan (1999)*
 - <http://www.utahbabywatch.org/foreiproviders/utstateplan.htm>
- Agency Information: Forms, Reports, Miscellaneous (various dates)
 - <http://www.utahbabywatch.org/agencyinfo/index.htm>

Vermont

- Vermont Special Education Guide: State Board of Education Special Education Rules and Other Pertinent Rules (effective June 2010) - See sections 2360.5 - 2360.5.8 for the overall early intervention program
 - http://www.education.vermont.gov/new/pdfdoc/pgm_sped/laws/educ_sped_guide.pdf

Virginia

- Infant & Toddler Connection of Virginia: Practice Manual (August 2011)
 - <http://www.infantva.org/Pr-PracticeManual-Forms.htm>
- Virginia's Part C Policies and Procedures (2000) and Final Q&A (Appendix X, 2002)
 - <http://www.infantva.org/ovw-PoliciesProcedures.htm>
 - See also Code of Virginia Related to Part C of the Individuals with Disabilities Education Act (various dates)
 - <http://www.infantva.org/ovw-CodeOfVirginia.htm>
- Reference Documents for Providers (various dates)
 - <http://www.infantva.org/Providers.htm#pr2>

Washington

- Washington includes policies and procedures within their Part C Annual State Applications (see FFY 2011 application)
 - <http://del.wa.gov/publications/esit/Default.aspx#reports>
 - See also - Guiding Concepts, Clarification Memos, Practice Guides, Checklists, Tools and more (**Scan down the page**)
 - <http://del.wa.gov/publications/esit/Default.aspx#contractors>

West Virginia

- WV Birth to Three State Guidance Related to IDEA 2004 (various dates), including new Eligibility Criteria (2009)
 - <http://www.wvdhhr.org/birth23/lawandregs.asp>
 - See also - Technical Assistance Bulletins (various dates)
 - <http://www.wvdhhr.org/birth23/techasstbulletins.asp>

Wisconsin

- Chapter HFS 90: Early Intervention Services for Children From Birth to Age 3 with Developmental Needs (2004)
 - <http://www.waisman.wisc.edu/birthto3/WPDP/txt/hfs090.html>
 - See also, Policies and Guidance (various dates)
 - <http://www.waisman.wisc.edu/birthto3/guidance.php>

Wyoming

- Part C Policies, Procedures, and FAQs (various dates)
 - <http://www.health.wyo.gov/dd/earlychildhood/partcinfo.html>

OSEP Policy Letters of Clarification Related to Part C of IDEA

January 1998 - February 2011

full texts available at http://www.nectac.org/idea/partc_letters.asp

Individuals may write to the Secretary of Education requesting clarification or interpretation of the IDEA statute or regulations. The Department of Education (ED) publishes responses to these queries quarterly in the Federal Register and to <http://www2.ed.gov/policy/speced/guid/idea/index.html>. A topical index to these letters is also available at <http://www2.ed.gov/policy/speced/guid/idea/letters/revpolicy/index.html>.

This table includes links to letters that specifically address issues related to Part C of the IDEA.

- Letters published July 2000 - December 2010 are publicly available at <http://www2.ed.gov/policy/speced/guid/idea/index.html>. Summaries are from the Federal Register.
- The letter in this collection dated 02/09/11 was received by NECTAC before online publication. The summary was created by NECTAC.
- Letters dated earlier than July 2000 were mostly found in the Pennsylvania Training and Technical Assistance Network (PATTAN) database at <http://www.pattan.net/category/Legal/Osep/>. Summaries are from the Federal Register.

Date	Recipient	State	Topic	Section of IDEA
2/9/11	Brad Hutton & Bill East	NY & VA	Transition	Part C and Part B - responding to questions from the Infant and Toddler Coordinators Association (ITCA) and the National Association of State Directors of Special Education (NASDSE) about OSEP 's Early Childhood Transition FAQ.
12/6/10	CSSOs and Lead Agency Directors	All	Monitoring of ARRA Funds	OSEP Memorandum 11-06 - Part C and Part B - notifying states of new OSEP monitoring activities of funds provided through the IDEA under the American Recovery and Reinvestment Act of 2009 (ARRA).
10/13/10	Lynne Marie Price	FL	Procedural Safeguards	Part C, Section 639 - regarding whether a State must provide parents with a copy of a test protocol that contains personally identifiable information about their child as part of their child's Part C IDEA records.
2/12/10	Janice M. Kane	FL	Individualized Family Service Plan	Part C, Section 636 - clarifying the relationship of peer reviewed research to the frequency and intensity of the early intervention services to be included in an infant's or toddler's individualized family service plan.
11/13/09	Rick Ingraham	CA	Evaluations, Parental Consent, and Reevaluations	Part C, Section 639, Procedural Safeguards - regarding when parental consent must be obtained for changes in the individualized family service plan.
10/27/09	Wendy Whipple	NV	Complaint Resolution	Part C, Section 635, Requirements for Statewide System - regarding the obligation of the State lead agency to provide compensatory services under Part C of the IDEA for children who were denied early intervention services, even after they moved out of the State.
6/19/09	Bradley Hutton	NY	Early Intervention Services	Part C, Section 632, Definitions - regarding New York's policy on respite service.

Date	Recipient	State	Topic	Section of IDEA
1/28/09	Dawn Wardyga	RI	State Interagency Coordinating Council	Part C, Section 641, State Interagency Coordinating Council - concerning parent membership on the State Interagency Coordinating Council (SICC)
10/17/08	CSSOs and Lead Agency Directors	All	Correction Of Noncompliance	OSEP Memorandum 09-02 - Part C and Part B - reiterating the steps a State must take in order to report that previously identified noncompliance has been corrected and describing how evidence of correction will be factored into the analysis of whether the State has demonstrated substantial compliance for purposes of determinations under Sections 616 and 642 of the IDEA.
7/1/08	Tracie Bullock Dickson	DC	Early Intervention Services	Part C, Section 632, Definitions - concerning when nebulizer treatments may be considered a health service under Part C of the IDEA.
11/28/07	Attorney Lawrence W. Berliner	CT	Complaint Resolution	Part C, Section 635 - Requirements for a Statewide System - clarifying that the current Part C regulations do not give an early intervention services provider an opportunity to respond to a complaint.
9/24/07	Individual (personally identifiable information redacted)	--	Content of Plan	Part C, Section 636 - Individualized Family Service Plan - ABA-DT therapy for child with autism - clarifying that the IFSP Team, which includes the child's parents, makes an individualized determination of whether a particular method of providing services is needed for a child to achieve the outcomes in the child's IFSP.
9/4/07	Janice M. Kane	FL	Content of Plan	Part C, Section 636 - Individualized Family Service Plan - Early intervention services and duplication of services - clarifying the State's obligation to provide any services that meet the Part C definition of early intervention.
3/6/07	Governor Rick Perry	TX	State Allocation Formula	Part C, Section 643 - Allocation of Funds - regarding increased numbers of individuals and families displaced by Hurricane Katrina - clarifying that allocations to each State under Part C of IDEA are based on the ratio of the number of infants and toddlers in that State to the number of infants and toddlers in all States and calculations are based on the most recent data available from the Census Bureau. The Department cannot make adjustments in the formula allocations to States based on data provided by an individual State.
11/4/05	Danita Munday	MS	Early Intervention Programs	Part C, Section 636 — Individualized Family Service Plan - regarding challenges in meeting the early intervention needs of infants and toddlers with disabilities and their families in the wake of Hurricane Katrina, clarifying the parent consent, interim individualized family service plan, residency, natural environments, and personnel standards requirements under Part C of IDEA; and providing an extension of the timeline for submission of the SPP granted pursuant to the Secretary's transition authority in section 303 of the Individuals with Disabilities Education Improvement Act of 2004.

Date	Recipient	State	Topic	Section of IDEA
11/4/05	Linda Pippins	LA	Early Intervention Programs	Part C, Section 636 — Individualized Family Service Plan - regarding challenges in meeting the early intervention needs of infants and toddlers with disabilities and their families in the wake of Hurricane Katrina, clarifying the parent consent, interim individualized family service plan, residency, natural environments, and personnel standards requirements under Part C of IDEA; and providing an extension of the timeline for submission of the SPP granted pursuant to the Secretary's transition authority in section 303 of the Individuals with Disabilities Education Improvement Act of 2004.
11/4/05	Janice Kane	FL	Early Intervention Programs	Part C, Section 636 — Individualized Family Service Plan - regarding challenges in meeting the early intervention needs of infants and toddlers with disabilities and their families in the wake of Hurricane Katrina, clarifying the parent consent, interim individualized family service plan, residency, natural environments, and personnel standards requirements under Part C of IDEA; and providing an extension of the timeline for submission of the SPP granted pursuant to the Secretary's transition authority in section 303 of the Individuals with Disabilities Education Improvement Act of 2004.
6/2/05	Sandy L. Morris	WA	Natural Environments	Part C, Section 636 - Individualized Family Service Plan - clarifying that IDEA 2004 continues the Department's longstanding interpretation that early intervention services must be provided in a natural environment, unless a written justification exists for providing these services in other settings
7/12/04	Rick Ingraham	CA	Child Find	Part C, Section 635 - Requirements for Statewide System - clarifying that Part C does not set forth a specific percentage of children that each State must serve, but States that establish numerical goals must ensure that only eligible children are identified and that eligible children and families are not denied services.
4/28/04	Janet D. Gully	IL	Early Intervention Services	Part C, Section 632 - Definitions - explaining regulations and other issues that should be taken into consideration when determining whether services provided after medical or surgical procedures are early intervention services that should be provided under Part C .
2/12/04	Individual (personally identifiable information redacted)	--	Child Find	Part C, Section 635 - Requirements for Statewide System - regarding the State lead agency's child find responsibilities under Part C of IDEA and whether a hospital can disclose information regarding an infant or toddler to a State's lead agency.
2/11/04	Mary Elder	TX	Transition	Part C, Section 636 - Individualized Family Service Plan - regarding whether parental consent is required to disclose referral information from a lead agency under Part C of IDEA to the State education agency or local education agency about children who will shortly turn three and transition from receiving early intervention services under Part C to potentially receiving special education and related services under Part B.

Date	Recipient	State	Topic	Section of IDEA
11/6/03	Linda Goodman	CT	Evaluations	Part C, Section 634 - Eligibility - clarifying whether audiological evaluations must be provided to an infant or toddler referred to Part C, who is suspected of having a communication delay, whose hearing has not been tested, and for whom an audiology evaluation is determined to be needed.
10/24/03	Linda Goodman	CT	Eligibility Criteria	Part C, Section 635 - Requirements for Statewide System - regarding the State's obligation to evaluate and assess infants or toddlers who are suspected of having a disability and whether the State can deny services to families who refuse to pay or repeatedly fail to keep appointments.
8/19/03	Individual (personally identifiable information redacted)	--	Procedural Safeguards	Part C, Section 635 - Requirements for Statewide System - regarding (1) the Office for Civil Rights' authority over complaints related to discrimination based on disability, (2) the resolution of individual complaints and the award of compensatory services under Part C of the IDEA, and (3) the lead agency's responsibility for general supervision of all Part C programs and activities, including the monitoring of agencies carrying out Part C services.
6/30/03	Individual (personally identifiable information redacted)	--	Early Intervention Services	Part C, Section 636 - Individualized Family Service Plan - clarifying that the regulations implementing Part C require that (1) written parental consent be obtained before conducting the initial evaluation and placement of a child and before initiating the provision of early intervention services and (2) there is no provision authorizing public agencies to use mediation or due process procedures to override a parent's refusal to consent to the initial provision of early intervention or special education and related services.
3/25/03	Linda Goodman	CT	Early Intervention Services	Part C, Section 636 - Individualized Family Service Plan - regarding whether assistive technology can be provided under Part C.
3/13/03	David K. Steele	SC	Early Intervention Services	Part C, Section 636 - Individualized Family Service Plan - clarifying that although the provision of respite or other care arrangements may be necessary for some families to participate in appropriate early intervention activities, the term respite is not intended to serve as child-care or baby-sitting assistance in ordinary circumstances.
11/20/02	Andrew Gomm	NM	Administration of Part C Funds	Part C, Section 643 - Allocation of Funds - clarifying that the Education Department General Administrative Regulations require recipients of IDEA Part C Federal grant awards to have a restricted indirect cost rate.
11/12/02	Rodney Watson	LA	Prohibition Against Supplanting	Part C, Section 637- State Application and Assurances - discussing the non-supplanting requirements for Part C funds and indicating that the total State and local expenditures should be considered, and not just lead agency funds.

Date	Recipient	State	Topic	Section of IDEA
8/13/02	Individual (personally identifiable information redacted)	--	State Participation	Part C, Section 634 - Eligibility - clarifying that participation by States in Part C is voluntary.
7/30/02	Individual (personally identifiable information redacted)	--	Natural Environments	Part C, Section 636 - Individualized Family Service Plan - regarding the history of implementation of the natural environments requirements of Part C of the IDEA since the early intervention program was originally enacted, and clarifying that, based on the child's IFSP, appropriate services can be provided in other environments.
6/11/02	Trish Howard	KY	Early Intervention Services	Part C, Section 636 - Individualized Family Service Plan - clarifying that (1) guidelines established by a State to assist teams in developing an individualized family service plan (IFSP) may not be implemented in a manner that restricts the authority and responsibility of the IFSP team and (2) that the IFSP team makes the final determination of the frequency and intensity of early intervention services needed by the child.
2/13/02	U.S. Congresswoman Judy Biggert	DC	Amendment of Regulations	Part C, Section 631 - Findings and Policy - regarding the Department of Education's decision to delay the issuance of any new regulations for the Part C program until after the IDEA is reauthorized and to withdraw the Notice of Proposed Rulemaking published in the Federal Register on September 5, 2000.
2/12/02	Kelly C. Wilson	IL	Early Intervention Services	Part C, Section 636 - Individualized Family Service Plan - clarifying (1) that the IFSP may include a particular methodology or instructional approach that is considered by the IFSP team to be integral to the design of an individualized program of services to meet the unique needs of the individual child and (2) that the State is required to provide all services identified in the IFSP and to ensure that those services are implemented according to the IFSP.
8/6/01	U.S. Senator Richard Shelby	DC	Natural Environments	Part C, Section 636 - Individualized Family Service Plan - regarding the history of implementation of the natural environments requirements of Part C of the IDEA since the early intervention program was originally enacted, and clarifying that, based on the child's IFSP, appropriate services can be provided in center-based programs.
6/14/01	U.S. Senator Ike Skelton	DC	Natural Environments	Part C, Section 636 - Individualized Family Service Plan - regarding the history and changes to the natural environments requirements of Part C of IDEA since the early intervention program was originally enacted, and clarifying that the need for parent networking and parent training could be addressed through the provision of appropriate services in the child's IFSP.
5/17/01	Deborah Barnett, Joanne Wounded Head	SD	Eligibility Criteria	Part C, Section 635 - Requirements for a Statewide System - regarding the use of informed clinical opinion in determining eligibility, the provision of respite care and transportation as part of early intervention services, and the need for appropriately trained staff.

Date	Recipient	State	Topic	Section of IDEA
5/3/01	Kurt Knickrehm	AR	Eligibility Criteria	Part C, Section 635 - Requirements for a Statewide System - clarifying the need to review public awareness and child find activities to ensure that culturally appropriate materials are provided to all populations in the State and that States can establish initial eligibility criteria but cannot set additional criteria for individual services for a child who has already been determined to be eligible under Part C.
5/2/01	Garry Gardner	IL	Eligibility Criteria	Part C, Section 635 - Requirements for a Statewide System - regarding the flexibility that Part C provides States in defining the developmental delay category for determining the eligibility of infants and toddlers with disabilities and the procedures that States must follow in making changes to this category.
4/16/01	U.S. Senator Robert C. Byrd	DC	Early Intervention Services	Part C, Section 636 - Individualized Family Service Plan - regarding the individualized family service plan (IFSP) process in determining the intensity and frequency of early intervention services under Part C, along with the financial responsibility for these services.
1/17/01	H. James T. Sears (TRICARE)	VA	Federal Interagency Coordinating Council	Part C, Sections 631-641 - regarding the FICC's development of a service guide, TRICARE and IDEA Part C: A Guide to Services, that addresses the interface between TRICARE, the Department of Defense's military health system, and Part C of IDEA.
1/2/01	Colleagues	--	Federal Interagency Coordinating Council	Part C, Sections 631-641 - regarding principles of family involvement and suggested standards of practice developed by the Federal Interagency Coordinating Council (FICC) to encourage meaningful involvement of family members at all levels of policy and service delivery planning.
12/19/00	Office of CHAMPUS Management Activity	CO	Payor of Last Resort	Part C, Sections 631-641 - regarding proposed CHAMPUS regulations (including its "pay first" and "medical services" provisions) and their relationship to Part C's "payor of last resort" and other provisions.
11/1/00	Individual (personally identifiable information redacted)	--	Natural Environments	Part C, Sections 631-641 - regarding the requirements of providing early intervention services in natural environments and including appropriate justifications on the IFSP.
10/19/00	Cecil Picard	LA	State Lead Agency General Supervisory Responsibility	Part C, Sections 631-641 - regarding the lead agency's responsibility under Part C concerning general administration and supervision, together with assigning financial responsibility among appropriate agencies.
9/25/00	Individual (personally identifiable information redacted)	--	Infant or Toddler with a Disability	Part C, Sections 631-641 - regarding the flexibility Part C provides States in defining the developmental delay category of eligibility of infants and toddlers with disabilities and in establishing standards that exceed Federal requirements.
9/18/00	Linda Renee Baker	IL	Definitions	Part C, Sections 631-641 - regarding the State's inability to serve as a "parent" under the Part C regulatory definition for a child who is a "ward" of the State.

Date	Recipient	State	Topic	Section of IDEA
8/16/00	Julie Goings (Bureau of Indian Affairs)	SD	Early Intervention Services	Part C, Sections 631-641 - regarding the role and responsibilities of the Bureau of Indian Affairs, States and tribes in providing services to children with disabilities from birth to age five who are members of the tribe.
8/11/00	Joanne C. Holmes	ME	Federal Interagency Coordinating Council	Part C, Sections 631-641 - regarding application of Section 644 of the IDEA and other Federal requirements to activities of the Federal Interagency Coordinating Council.
7/17/00	Part C Lead Agencies	All	Procedural Safeguards	Part C, Sections 631-641 - regarding guidance on State complaint resolution procedures under Part C of IDEA.
5/17/00	Susan Cano	VT	Provision of FAPE to Children With Disabilities Below Age 3	Part C, Sections 631-641 - clarifying that when a child below age three receives FAPE, States must comply with the requirements of: (1) Both Parts B and C of IDEA when Part B funds are used, and (2) with Part C even if no IDEA Part B or C funds are used for that child as long as the State receives any Part C funds.
5/12/00	Individual (personally identifiable information redacted)	--	Natural Environments	Part C, Sections 631-641 - regarding a State's responsibility to ensure the provision of early intervention services in natural environments, to the maximum extent appropriate to the needs of the child, and the Individualized Family Service Plan Team's responsibility to determine the location in which those services are provided.
3/22/00	James R. Nelson	IL	Part C Funds, Private Insurance, Medicaid	Part C, Section 640, Payor of Last Resort - explaining that (1) with respect to the use of a family's private insurance for services under Part C of IDEA, pending further regulatory action, the Department will accept a State's reasonable interpretation of Part C of IDEA, including OSEP's prior policy letters and the position set out in the Department's Notice of Proposed Rulemaking on this issue; (2) with respect to the use of public insurance, Part C of IDEA funds are the payor of last resort; and (3) if a family does not permit access to its Medicaid payments, Part C of IDEA requires that a State ensure that the inability of a family to pay for required services does not result in the denial of services under Part C of IDEA to the child or to the child's family.
3/21/00	U.S. Senator Dianne Feinstein	DC	Natural Environments	Part C, Sections 631-641 - responding to separate inquiries from constituents, regarding the history and changes to the natural environments requirements of Part C of IDEA since the law was originally enacted, and clarifying that the need for parent networking and parent training could be addressed through the provision of appropriate services in the child's Individualized Family Service Plan (IFSP).

Date	Recipient	State	Topic	Section of IDEA
3/21/00	U.S. Congressman Mike Thompson	DC	Natural Environments	Part C, Sections 631-641 - regarding the history of and changes to the natural environments provisions of Part C of IDEA and the requirement that decisions about the provision of required early intervention services in natural environments must be individually determined by the child's IFSP team, and clarifying that determinations regarding services, including services for parents and the location of services to a child, are made by the child's IFSP team.
3/21/00	U.S. Congresswoman Lynn Woolsey	DC	Natural Environments	Part C, Sections 631-641 - regarding the natural environments provision of Part C of IDEA, and clarifying, in general, that providing services to an infant or toddler with a disability in a setting such as a center based program that is limited exclusively to infants and toddlers with disabilities would not constitute a natural environment, but that early intervention services may be provided in a center-based program serving only children with disabilities, if the IFSP team justifies in the IFSP that this location is necessary to meet the individual needs of a child for a particular service.
12/21/99	TRICARE, Office of the General Counsel	DOD	Payments by CHAMPUS and TRICARE Program	Part C, Section 640 - Payor of Last Resort - requesting clarification of, and amendment to, a Department of Defense proposed regulation to provide that CHAMPUS and TRICARE is first payor for early intervention services under Part C of IDEA, as required by the IDEA Amendments of 1997.
12/15/99	E.F. Thompson, Jr.	MS	State Lead Agency General Supervisory Responsibility	Part C, Section 635 - Requirements for Statewide System - regarding a Part C State lead agency's general supervisory responsibility to ensure State-wide compliance within its Part C system and to identify whether deficiencies in some districts exist in other districts and to correct all identified deficiencies.
12/15/99	Sheryl Dicker		Definitions	Part C, Sections 631-641 - clarifying that the Part C regulatory definition of "parent," like the statutory definition applicable under both Parts B and C of IDEA, does not include the "State" if the State is the child's guardian.
7/27/99	Howard K. Koh	MA	State Allocation Formula	Part C, Sections 631-641 - regarding population basis for calculating State allocations of Part C funds.
6/11/99	U.S. Congressman Martin Meehan	DC	Natural Environments	Part C, Sections 631-641 - regarding serving infants and toddlers with disabilities in natural environments appropriate for the individual child and his or her family.
5/26/99	John B. Heskett	MO	Natural Environments	Part C, Sections 631-641 - regarding States' obligations to ensure that early intervention services are provided to infants and toddlers with disabilities in natural environments, including the home or community settings in which typically developing children participate, and that individualized determinations must be made by the individualized family service plan team (which includes the parent or parents) as to whether the setting in which the services are being offered would be the natural environment for the particular child.

Date	Recipient	State	Topic	Section of IDEA
4/30/99	Julie Curry	IA	FAPE for Children With Disabilities Below Age 3	Part C, Sections 631-641 - confirming that when a child below age three receives a free appropriate public education, states must comply with the requirements of: (1) both Parts B and C of IDEA when Part B funds are used, and (2) with Part C even if no IDEA Part B or C funds are used for that child as long as the State receives any Part C funds.
12/30/98	Ginny Duncan	PA	Evaluations	Part C, Sections 631-641 - regarding the role of a service coordinator on the Multidisciplinary Evaluation Team and the exclusion of service providers from initial evaluations.
12/16/98	Mary Miller	IL	Implementation of a Statewide System	Part C, Sections 631-641 - regarding the obligation to ensure that early intervention services are available to all eligible infants and toddlers and their families.
10/5/98	Wayne Fox & Mary Alice Leonard-Heath	VT	State Interagency Coordinating Council	Part C, Sections 631-641 - regarding ICC membership of a representative of a State lead agency.
7/17/98	Mary Elder	TX	Natural Environments	Part C, Section 636, Individualized Family Service Plan - regarding use of Part C and State funds to provide early intervention services to a child with a disability in a setting which has been determined by the child's Individualized Family Service Team not to be the child's natural environment..
6/5/98	James T. Howell	FL	Implementation of a System of Payments	Part C, Sections 631-641 - regarding imposition of a system of payments in a State that uses Part B funds to pay for early intervention services for infants and toddlers with disabilities.
5/19/98	Howard A. Peters	IL	Obligation of Funds	Part C, Sections 631-641 - regarding the Department's lack of authority to grant a State's request for an extension of the period of obligation of any Federal grant funds.
4/27/98	Individual (personally identifiable information redacted)	--	Natural Environments	Part C, Section 636 - Individualized Family Service Plan - regarding a State's responsibility to ensure the provision of early intervention services in natural environments, to the maximum extent appropriate to the needs of the child, and the Individualized Family Service Plan Team's responsibility to determine the location in which those services are provided.
3/6/98	Ouida Holder	AL	Personnel Standards	Part C, Section 635 - Requirements for Statewide System - regarding personnel standards for providers of special instruction.
3/4/98	Maureen Greer	IN	Statutory Changes Made to Part C by IDEA Amendments of 1997	Part C - regarding when States can access Medicaid and private insurance in ensuring the provision of appropriate early intervention services
1/7/98	Carlos Flores	CA	Obligation to Serve All Eligible Children in the State	Part C, Section 634, Eligibility - regarding the relationship between the Personal Responsibility and Work Opportunity Reconciliation Act of 1996 and Part H, now Part C.

Selected Online Publications and Journal Articles Related to the Implementation of Part C 2010-2011

Online Publications

2011 ITCA Tipping Points Survey - Part C Implementation: State Challenges and Responses. IDEA Infant and Toddler Coordinators Association (2011). Retrieved from http://www.ideainfanttoddler.org/pdf/2011_State_Challenges.pdf (35 pages)

2010 ITCA Tipping Points Survey - Part C Implementation: State Challenges and Responses. IDEA Infant and Toddler Coordinators Association (2010). Retrieved from http://www.ideainfanttoddler.org/pdf/2010_State_Challenges.pdf (28 pages)

Family Data: Indicator C4 Highlights - Results and State Approaches, FFY 2009. Early Childhood Outcomes Center. (2011, July). Retrieved from http://www.fpg.unc.edu/~eco/assets/pdfs/C4_Highlights_2011.pdf (2 pages)

IDEA National Assessment Implementation Study (NCEE 2011-4027). Bradley, M. C., Daley, T., Levin, M., O'Reilly, R., Parsad, A., Robertson, A., & Werner, A. (2011, July). Washington, DC: National Center for Education Evaluation and Regional Assistance, Institute of Education Sciences, U. S. Department of Education. Retrieved from <http://ies.ed.gov/ncee/pubs/20114026/index.asp> (386 pages)

The abridged summary, *National Assessment of IDEA Overview* (NCEE 2011-4026), (2011, July), is available at <http://ies.ed.gov/ncee/pubs/20114026/pdf/20114026.pdf> (42 pages)

ITCA Finance Survey: July 1, 2009 – June 30, 2010. IDEA Infant and Toddler Coordinators Association (2010). Retrieved from http://www.ideainfanttoddler.org/pdf/ITCA_2010_Finance_Survey.pdf (69 pages)

Outcomes for Children Served through IDEA's Early Childhood Programs. Early Childhood Outcomes Center. (2011, May). Retrieved from <http://www.fpg.unc.edu/~eco/assets/pdfs/outcomesforchildrenfinal.pdf> (2 pages)

The Outcomes of Early Intervention for Infants and Toddlers with Disabilities and their Families. Goode, S., Diefendorf, M., & Colgan, S. (2011, July). Retrieved from <http://www.nectac.org/~pdfs/pubs/outcomesofearlyintervention.pdf> (2 pages)

Part C Eligibility Considerations for Infants and Toddlers Who Are Deaf or Hard of Hearing. IDEA Infant & Toddler Coordinators Association & National Center for Hearing Assessment and Management. (2011, January). Retrieved from http://www.infanthearing.org/earlyintervention/part_c_eligibility.pdf (6 pages)

Part C SPP/APR 2011 (FFY 2009), 2010 (FFY 2008), 2009 (FFY 2007) Indicator Analyses. U.S. Department of Education, Office of Special Education Programs. (Ed.). (2011, 2010, 2009). Retrieved from <http://www.nectac.org/partc/partcapr.asp> (various pages)

Patterns in the Identification of and Outcomes for Children and Youth with Disabilities (NCEE 2010-4005). Blackorby, J., Schiller, E., Mallik, S., Hebbeler, K., Huang, T., Javitz, H., Marder, C., Nagle, K., Shaver, D., Wagner, M., and Williamson, C. (2010, January). Washington, DC: National Center for Education Evaluation and Regional Assistance, Institute of Education Sciences, U.S. Department of Education. Retrieved from <http://ies.ed.gov/ncee/pubs/20104005/index.asp> (493 pages)

Journal Articles

The Cost of Serving Infants and Toddlers under Part C. Johnson, J. L., Brown, S., Chang, C., Nelson, D., & Mrazek, S. (2011). *Infants and Young Children*, 24(1), 101-113. Abstract available at http://journals.lww.com/iyjournal/Abstract/2011/01000/The_Cost_of_Serving_Infants_and_Toddlers_Under.8.aspx

From Then to Now: The Evolution of Part C. Hebbeler, K., Greer, M., & Hutton, B. (2011). *Zero to Three*, 31(4), 4-10. Abstract available at http://main.zerotothree.org/site/MessageViewer?em_id=7528.0&JServSessionIda004=hmgkx2cb11.app219d

The Impact of Race on Participation in Part C Early Intervention Services. Feinberg, E., Silverstein, M., Donahue, S. (2011). *Journal of Developmental and Behavioral Pediatrics*, 32(4), 284-291. doi: 10.1097/DBP.0b013e3182142fbd. Abstract available at http://journals.lww.com/jrnldb/Abstract/2011/05000/The_Impact_of_Race_on_Participation_in_Part_C.2.aspx

Prevalence of Autism Spectrum Disorders in Toddlers Receiving Early Intervention Services. Worley, J. A., Matson, J. L., Sipes, M., & Kozlowski, A. M. (2011). *Research in Autism Spectrum Disorders Journal*, 5(2), 920-925. Abstract available at <http://www.sciencedirect.com/science/article/pii/S1750946710001674>

Risk Factors Associated with Children Lost to Care in a State Early Childhood Intervention Program. Giannoni, P. P., & Kass, P. H. (2010). *Research in Developmental Disabilities: A Multidisciplinary Journal*, 31(4), 914-923. Abstract available at <http://www.ncbi.nlm.nih.gov/pubmed/20338722>

Service Provider Combinations and the Delivery of Early Intervention Services to Children and Families. Raspa, M., Hebbeler, K., Bailey, D. B., & Scarborough, A. A. (2010). *Infants and Young Children*, 23(2), 132-144. Abstract available at http://journals.lww.com/iyjournal/Abstract/2010/04000/Service_Provider_Combinations_and_the_Delivery_of.7.aspx

States' Accountability and Progress in Serving Young Children with Disabilities. Kasprzak, C., Hurth, J., Rooney, R., Goode, S. E., Danaher, J. C., Whaley, K. T., Ringwalt, S. S., & Cate, D. (2011). *Topics in Early Childhood Special Education*. Advance online publication May 2011. doi:10.1177/0271121411408119. Abstract available at <http://tec.sagepub.com/content/early/2011/05/19/0271121411408119.abstract>

Using Survival Analysis to Describe Developmental Achievements of Early Intervention Recipients at Kindergarten. Scarborough, A. A., Hebbeler, K. M., Spiker, D., & Simeonsson, R. J. (2011). *Infants and Young Children*, 24(2), 133-152. Abstract available at http://journals.lww.com/iyjournal/Abstract/2011/04000/Using_Survival_Analysis_to_Describe_Developmental.3.aspx

Section III:

Part C Program Contact Information

OSEP Part C State Contacts	37
NECTAC List of Part C Lead Agencies.....	39
Part C Coordinators and Infant/Toddler Program Contacts in States and Jurisdictions.....	41
Chairs of State and Jurisdictional Interagency Coordinating Councils.....	49
Contact List of State ICC Staff.....	57

OSEP Part C State Contacts

State Assignments

Division Phone (202) 245-7459, Option 1

Division Fax (202) 245-7614

updated September 20, 2011

State / Jurisdiction	Contact	E-mail	Phone
AK	Hillary Tabor	hillary.tabor@ed.gov	(202) 245-7813
AL	Kate Moran	kate.moran@ed.gov	(202) 245-7315
AR	Virginia Sheppard	virginia.sheppard@ed.gov	(202) 245-7353
AS	Brenda Wilkins	brenda.wilkins@ed.gov	(202) 245-6920
AZ	Debra Jennings	debra.jennings@ed.gov	(202) 245-7389
CA	Rhonda Spence	rhonda.spence@ed.gov	(202) 245-7382
CO	Bob MacGillivray	bob.macgillivray@ed.gov	(202) 245-7433
CT	Tammy Barnhill-Proctor	tammy.proctor@ed.gov	(202) 245-7333
DC	Kimberly Mitchell	kimberly.mitchell@ed.gov	(202) 245-7453
DE	Jennifer Miley	jennifer.miley@ed.gov	(202) 245-6049
FL	Hillary Tabor	hillary.tabor@ed.gov	(202) 245-7813
GA	Jennifer Simpson	jennifer.simpson@ed.gov	(202) 245-6042
GU	Charlie Kniseley	charlie.kniseley@ed.gov	(202) 245-7322
HI	Debra Jennings	debra.jennings@ed.gov	(202) 245-7389
IA	Kimberly Mitchell	kimberly.mitchell@ed.gov	(202) 245-7453
ID	Christine Pilgrim	christine.pilgrim@ed.gov	(202) 245-7351
IL	Barbara Thomas	barbara.thomas@ed.gov	(202) 245-7386
IN	Jennifer Simpson	jennifer.simpson@ed.gov	(202) 245-6042
KS	Hillary Tabor	hillary.tabor@ed.gov	(202) 245-7813
KY	Kimberly Mitchell	kimberly.mitchell@ed.gov	(202) 245-7453
LA	Jennifer Simpson	jennifer.simpson@ed.gov	(202) 245-6042
MA	Ken Kienas	ken.kienas@ed.gov	(202) 245-7621
MD	Sheryl Parkhurst	sheryl.parkhurst@ed.gov	(202) 245-7472
ME	Danny Rice	danny.rice@ed.gov	(202) 245-7888
MI	Bob MacGillivray	bob.macgillivray@ed.gov	(202) 245-7433
MN	Rhonda Spence	rhonda.spence@ed.gov	(202) 245-7382
MO	Susan Kauffman	susan.kauffman@ed.gov	(202) 245-6432
MP	Lucille Sleger	lucille.sleger@ed.gov	(202) 245-7528
MS	Kate Moran	kate.moran@ed.gov	(202) 245-7315
MT	Bob MacGillivray	bob.macgillivray@ed.gov	(202) 245-7433
NC	Danny Rice	danny.rice@ed.gov	(202) 245-7888
ND	Susan Kauffman	susan.kauffman@ed.gov	(202) 245-6432
NE	Jennifer Miley	jennifer.miley@ed.gov	(202) 245-6049
NH	Dwight Thomas	dwight.thomas@ed.gov	(202) 245-6238
NJ	Jennifer Miley	jennifer.miley@ed.gov	(202) 245-6049
NM	Virginia Sheppard	virginia.sheppard@ed.gov	(202) 245-7353
NV	Tammy Barnhill-Proctor	tammy.proctor@ed.gov	(202) 245-7333

State / Jurisdiction	Contact	E-mail	Phone
NY	Hillary Tabor	hillary.tabor@ed.gov	(202) 245-7813
OH	Brenda Wilkins	brenda.wilkins@ed.gov	(202) 245-6920
OK	Tammy Barnhill-Proctor	tammy.proctor@ed.gov	(202) 245-7333
OR	Josiah Wiley	josiah.wiley@ed.gov	(202) 245-7350
PA	Josiah Wiley	josiah.wiley@ed.gov	(202) 245-7350
PR	Diana Chang	diana.chang@ed.gov	(202) 245-6061
RI	Virginia Sheppard	virginia.sheppard@ed.gov	(202) 245-7353
SC	Rhonda Spence	rhonda.spence@ed.gov	(202) 245-7382
SD	Josiah Wiley	josiah.wiley@ed.gov	(202) 245-7350
TN	Charlie Kniseley	charlie.kniseley@ed.gov	(202) 245-7322
TX	Susan Kauffman	susan.kauffman@ed.gov	(202) 245-6432
UT	Jennifer Miley	jennifer.miley@ed.gov	(202) 245-6049
VA	Danny Rice	danny.rice@ed.gov	(202) 245-7888
VI	Sheryl Parkhurst	sheryl.parkhurst@ed.gov	(202) 245-7472
VT	Virginia Sheppard	virginia.sheppard@ed.gov	(202) 245-7353
WA	Tammy Barnhill-Proctor	tammy.proctor@ed.gov	(202) 245-7333
WI	Barbara Thomas	barbara.thomas@ed.gov	(202) 245-7386
WV	Barbara Thomas	barbara.thomas@ed.gov	(202) 245-7386
WY	Virginia Sheppard	virginia.sheppard@ed.gov	(202) 245-7353

NECTAC List of Part C Lead Agencies

updated September 22, 2011

available at <http://www.nectac.org/partc/ptclead.asp>

State/Jurisdiction ^{1,2}	Lead Agency
Alabama	Rehabilitation Services
Alaska	Health and Social Services
American Samoa	Health
Arizona	Economic Security
Arkansas	Human Services/Developmental Disabilities
California	Developmental Services
Colorado	Human Services/Developmental Disabilities
Connecticut	Developmental Services
Delaware	Health and Social Services
District of Columbia	Education
Florida	Health
Georgia	Maternal and Child Health/Public Health
Guam	Education
Hawaii	Health
Idaho	Health and Welfare
Illinois	Human Services
Indiana	Family and Social Services
Iowa	Education
Kansas	Health and Environment
Kentucky	Health and Family Services/Public Health
Louisiana	Health and Hospitals/Developmental Disabilities
Maine	Education
Maryland	Education
Massachusetts	Public Health
Michigan	Education
Minnesota	Education
Mississippi	Health
Missouri	Education
Montana	Public Health and Human Services
Nebraska	Education <i>and</i> Health and Human Services (Co-Lead)
Nevada	Health and Human Services

1. Federated States of Micronesia, Republic of Marshall Islands and Republic of Palau are not currently eligible for this federal program.
2. The Department of the Interior (DOI) receives allocation from the U.S. Department of Education, which then is distributed by DOI to tribes.

State/Jurisdiction^{1, 2}	Lead Agency
New Hampshire	Health and Human Services
New Jersey	Health and Senior Services
New Mexico	Health/Developmental Disabilities Support Division
New York	Health
North Carolina	Health and Human Services
North Dakota	Human Services
Northern Mariana Islands	Education
Ohio	Health
Oklahoma	Education
Oregon	Education
Pennsylvania	Public Welfare
Puerto Rico	Health
Rhode Island	Human Services
South Carolina	First Steps to School Readiness
South Dakota	Education
Tennessee	Education
Texas	Assistive and Rehabilitative Services
Utah	Health
Vermont	Education <i>and</i> Human Services (Co-Lead)
Virgin Islands	Health
Virginia	Behavioral Health and Developmental Services
Washington	Early Learning (July 2010)
West Virginia	Health and Human Resources
Wisconsin	Health Services (July 2010)
Wyoming	Health

1. Federated States of Micronesia, Republic of Marshall Islands and Republic of Palau are not currently eligible for this federal program.
2. The Department of the Interior (DOI) receives allocation from the U.S. Department of Education, which then is distributed by DOI to tribes.

Part C Program Coordinators and Infant/Toddler Program Contacts

updated September 28, 2011

available at <http://www.nectac.org/contact/ptccoord.asp>

Alabama

Elizabeth Prince, Part C Coordinator
Early Intervention Program
Department of Rehabilitation Services
602 South Lawrence Street
Montgomery, AL 36104
Phone: (334) 293-7166
Fax: (334) 293-7375
Email: betsy.prince@rehab.alabama.gov
Website: <http://www.nectac.org/shortURL.asp?sURL=AL-partc>

Alaska

Erin Kinavey, Part C Coordinator
State of Alaska/DHSS
323 East 4th Avenue
PO Box 240249
Anchorage, AK 99501
Phone: (907) 269-3423
Fax: (907) 269-3497
Email: erin.kinavey@alaska.gov
Website: <http://health.hss.state.ak.us/ocs/InfantLearning/default.htm>

American Samoa

Ruth Te'o, Acting Part C Coordinator
Department of Health
Helping Hands Early Intervention Program
Early Hearing Detection and Intervention
PO Box 7477
Pago Pago, AS 96799
Phone: (684) 699-4987
Fax: (684) 699-4985
Email: ruth.teo@helpinghands-as.org
Website: <http://helpinghands-as.org/index.html>

Arizona

Molly Bright, Part C Coordinator and Exec Director
Arizona Early Intervention Program
Department of Economic Security
3839 North 3rd Street, Suite 304
Site Code #801 A-6
Phoenix, AZ 85012
Phone: (602) 532-9960
Fax: (602) 200-9820
AltPhone1: (888) 439-5609 (in AZ)
Email: mbright@azdes.gov
Website: <http://www.azdes.gov/main.aspx?menu=98&id=3026>

Arkansas

Tracy Turner, Part C Coordinator
Department of Health and Human Services
Division of Developmental Disabilities
PO Box 1437, Slot N504
Little Rock, AR 72203-1437
Phone: (501) 682-8156
Fax: (501) 682-8890
AltPhone1: (501) 682-8695
AltPhone2: (888) 439-5609 (in AR)
Email: tracy.turner@arkansas.gov
Website: <http://www.arkansas.gov/dhs/ddds/FirstConn/index.html>

Bureau of Indian Education

Debbie Lente-Jojola, Supervisory Ed Specialist, Early
Childhood
Division of Performance and Accountability
Bureau of Indian Education/Albuquerque Service Center
1011 Indian School Road, NW, Suite 332
Albuquerque, NM 87104
Phone: (505) 563-5258
Fax: (505) 563-5281
Email: debra.lentejojola@bie.edu
Website: <http://www.bie.edu/home.aspx>

California

Don Braeger, Manager
Children and Family Services Branch
Department of Developmental Services
1600 9th Street, Room 330, MS 3-22
Sacramento, CA 95814
Phone: (916) 654-3681
AltPhone1: (800) 515-2229
Fax: (916) 654-3255
Email: don.braeger@dds.ca.gov
Website: <http://www.dds.ca.gov/EarlyStart/Home.cfm>

Colorado

Ardith Ferguson, Part C Coordinator
CDHS-Division for Developmental Disabilities
4055 S. Lowell Boulevard
Denver, CO 80236
Phone: (303) 866-7657
Fax: (303) 866-7680
Email: ardith.ferguson@state.co.us
Website: <http://www.eicolorado.org>

Connecticut

Linda Goodman, Part C Coordinator
Birth to Three System
Department of Developmental Services
460 Capitol Avenue
Hartford, CT 06106-1308
Phone: (860) 418-6147
Fax: (860) 418-6003
AltPhone1: (800) 505-7000 (Referrals)
Email: linda.goodman@ct.gov
Website: <http://www.birth23.org>

Delaware

Rosanne Griff-Cabelli, Part C Coordinator
Division of Management Services
Department of Health and Social Services
Main Administration Building, Room 251
1901 North Dupont Highway
New Castle, DE 19720
Phone: (302) 255-9135
Fax: (302) 255-4407
Email: rosanne.griff-cabelli@state.de.us
Website:
<http://www.dhss.delaware.gov/dhss/dms/epqc/birth3/directry.html>

Department of Defense

Audrey Ardison, Program Manager
Educational and Developmental Intervention Services
Health Policy and Services
HQ, US Army Medical Command
2050 Worth Road, Suite 10
Fort Sam Houston, TX 78234
Phone: (210) 221-8466
Fax: (210) 221-7235
Email: audrey.ardison@amedd.army.mil
Website: <http://www.edis.army.mil>

District of Columbia

Jerri Johnston-Stewart, Program Manager
Office of the State Superintendent of Education (OSSE)
Division of Special Education
810 First Street, NE, 5th Floor
Washington, DC 20002
Phone: (202) 727-5853
Fax: (202) 724-7230
Email: jerri.johnston-stewart@dc.gov
Website: <http://seo.dc.gov/service/dc-early-intervention-program>

Florida

Lynn Marie Price, Bureau Chief for Early Interventions
Children's Medical Services
Early Steps
State Department of Health
4052 Bald Cypress Way SE, BIN A06
Tallahassee, FL 32399-1707
Phone: (850) 245-4200
Fax: (850) 921-5241
AltPhone1: (800) 654-4440 (Main)
Email: lynnmarie_price@doh.state.fl.us
Website: http://www.cms-kids.com/families/early_steps/early_steps.html

Georgia

Chase Hall Bolds, Program Manager
Babies Can't Wait
Office of Children and Youth with Special Needs
MCH, DPH
2 Peachtree Street N.W. Suite 11-112
Atlanta, GA 30303
Phone: (404) 657-2878
Fax: (404) 657-2763
Email: chbolds@dhr.state.ga.us
Website: <http://health.state.ga.us/programs/bcw/index.asp>

Guam

Cathy Tydingco, Part C Coordinator
Division of Special Education
Department of Education
PO Box DE
Hagåtña, GU 96932
Phone: (671) 300-1323
Fax: (671) 647-4401
Email: cbtydingco@gdoe.net

Hawaii

Sue Brown, Part C Coordinator
Early Intervention Section
State Department of Health
1350 South King Street, #200
Honolulu, HI 96814
Phone: (808) 594-0006
Fax: (808) 594-0015
Email: sue.brown@doh.hawaii.gov
Website: <http://hawaii.gov/health/family-child-health/eis/>

Idaho

Mary Jones, Program Manager
Children's Developmental Services
State Department of Health and Welfare
450 West State Street, 5th Floor
PO Box 83720
Boise, ID 83720-0036
Phone: (208) 334-5523
Fax: (208) 332-7330
AltPhone1: (800) 926-2588
Email: jonesm@dhw.idaho.gov
Website: <http://healthandwelfare.idaho.gov/default.aspx?TabId=78>

Illinois

Janet Gully, Chief
Department of Human Services
Division of Community Health and Prevention
Bureau of Early Intervention
222 South College, 2nd Floor
Springfield, IL 62704
Phone: (217) 782-1981
Fax: (217) 524-6248
Email: janet.gully@illinois.gov
Website: <http://www.dhs.state.il.us/page.aspx?item=32009>

Indiana

Dawn Downer, Part C Director
First Steps
Bureau of Child Development Services
Division of Disability Rehabilitation
402 West Washington Street, Rm 364, MS51
Indianapolis, IN 46204
Phone: (317) 233-9229
Fax: (317) 234-6701
AltPhone1: (800) 441-7837 (in IN)
Email: dawn.downer@fssa.in.gov
Website: <http://www.in.gov/fssa/ddrs/2633.htm>

Iowa

Julie Curry, State Coordinator
Early ACCESS (IDEA/Part C)
Iowa Department of Education
Bureau of Early Childhood Services
400 E. 14th Street, Grimes Building
Des Moines, IA 50319-0146
Phone: (515) 281-5437
Fax: (515) 242-6019
AltPhone1: (888) 425-4371 (inquiries/referrals to early intervention)
Email: julie.curry@iowa.gov
Website: <http://www.nectac.org/shortURL.asp?sURL=IA-partc>

Kansas

Sarah Walters, Part C Coordinator
Infant-Toddler Services
State Department of Health and Environment
Curtis State Office Building, Suite 220
Topeka, KS 66612
Phone: (785) 296-2245
Fax: (785) 296-8626
AltPhone1: (800) 332-6262 (in KS)
Email: tsmith@kdheks.gov
Website: <http://www.ksits.org>

Kentucky

Paula Goff, Part C Coordinator
First Steps
Early Childhood Development Branch
Department for Public Health
275 East Main Street, HS2WC
Frankfort, KY 40621
Phone: (502) 564-3756 x3973
Fax: (502) 564-8389
Email: paula.goff@ky.gov
Website: <http://chfs.ky.gov/dph/firststeps.htm>

Louisiana

Brenda Sharp, Part C Coordinator
Office for Citizens with Developmental Disabilities
PO Box 3117
628 North Fourth Street, Bin #21
Baton Rouge, LA 70821-3117
Phone: (225) 342-0095
Fax: (225) 342-8823
Email: brenda.sharp@la.gov
Website: <http://new.dhh.louisiana.gov/index.cfm/page/139/n/139>

Maine

Debra Hannigan, Director
Child Development Services
Department of Education
State House Station #146
Augusta, ME 04333
Phone: (207) 624-6660
Fax: (207) 624-6661
AltPhone1: (800) 355-8611
Email: debra.hannigan@maine.gov
Website: <http://www.maine.gov/education/speced/cds/index.html>

Maryland

Marcella Franczkowski, Branch Chief/Program Manager
Early Childhood Intervention and Education
Div of Special Education/Early Intervention Services
State Department of Education
200 West Baltimore Street
Baltimore, MD 21201
Phone: (410) 767-0261
Fax: (410) 321-6328
Email: mfranczkowski@msde.state.md.us
Website:
<http://www.marylandpublicschools.org/MSDE/divisions/earlyinterv/>

Massachusetts

Ron Benham, Part C Coordinator
State Department of Public Health
250 Washington Street, 5th Floor
Boston, MA 02108-4619
Phone: (617) 624-5901
Fax: (617) 624-5927
AltPhone1: (617) 624-5070
AltPhone2: (800) 905-8437 (EI Central Directory)
Email: ron.benham@state.ma.us
Website: <http://www.nectac.org/shortURL.asp?sURL=MA-partC>

Michigan

Vanessa Winborne, Part C Coordinator
Early On Michigan
Office of Early Childhood Education and Family
Services
State Department of Education
PO Box 30008
Lansing, MI 48909-7508
Phone: (517) 335-4865
Fax: (517) 373-7504
AltPhone1: (800) 327-5966 (in MI)
AltPhone2: (517) 668-0185 (outside Michigan)
Email: winbornev@michigan.gov
Website: <http://www.1800earlyon.org/>

Minnesota

Loraine Jensen, Part C Coordinator
State Department of Education
Early Learning Services
1500 Highway 36 West
Roseville, MN 55113-4266
Phone: (651) 582-8523
Fax: (651) 582-8494
Email: loraine.jensen@state.mn.us
Website: <http://www.nectac.org/shortURL.asp?sURL=MN-partC>

Mississippi

Susan Boone, Part C Coordinator
Office of Child and Adolescent Health
570 East Woodrow Wilson
PO Box 1700
Jackson, MS 39215-1700
Phone: (601) 576-7816
Fax: (601) 576-7540
AltPhone1: (800) 451-3903 (in MS)
Email: susan.boone@msdh.state.ms.us
Website:
<http://www.msdh.state.ms.us/msdhsite/index.cfm/41,0,74.html>

Missouri

Pam Thomas, Part C Coordinator
Department of Elementary and Secondary Education
Early Intervention Services
PO Box 480
Jefferson City, MO 65102-0480
Phone: (573) 751-3559
Fax: (573) 526-4404
Email: pam.thomas@dese.mo.gov
Website: <http://dese.mo.gov/divspeced/FirstSteps/index.html>

Montana

Erica Swanson, Part C Coordinator
Developmental Disabilities Program
Community Services Bureau
Department of Public Health and Human Services
PO Box 4210
Helena, MT 59604-4210
Phone: (406) 444-5647
Fax: (406) 444-0230
Email: epeterson2@mt.gov
Website: <http://www.nectac.org/shortURL.asp?sURL=MT-partc>

Nebraska

Amy Bunnell, Part C Coordinator
Early Development Network
NE Health and Human Services
301 Centennial Mall South
Lincoln, NE 68509
Phone: (402) 471-9329
Fax: (402) 471-6352
Email: amy.bunnell@nebraska.gov
Website: <http://edn.ne.gov/>

Joan Luebbers, Part C Coordinator
Office of Special Education
State Department of Education
PO Box 94987
Lincoln, NE 68509-4987
Phone: (402) 471-2463
Fax: (402) 471-5022
Email: joan.luebbers@nebraska.gov
Website: <http://edn.ne.gov/>

Nevada

Wendy Whipple, Part C Coordinator
Department of Health & Human Services
Aging and Disability Services Division (ADSD)
IDEA, Part C Office
3416 Goni Road, Building D, Suite 132
Carson City, NV 89706
Phone: (775) 687-4210 x242
Fax: (775) 687-4264
Email: wwhipple@adsd.nv.gov
Website: <http://health.nv.gov/BEIS.htm>

New Hampshire

Carolyn Stiles, Part C Coordinator/Program Specialist
Family Centered Early Supports and Services
Bureau of Developmental Services
Department of Health and Human Services
105 Pleasant Street
Concord, NH 03301
Phone: (603) 271-5122
Fax: (603) 271-5166
AltPhone1: (800) 852-3345 x5122 (in NH)
Email: cstiles@dhhs.state.nh.us
Website: <http://www.dhhs.nh.gov/dcbcs/bds/earlysupport/index.htm>

New Jersey

Terry Harrison, Part C Coordinator
Early Intervention System
Division of Family Health Services
Department of Health and Senior Services
PO Box 364
Trenton, NJ 08625-0364
Phone: (609) 777-7734
Fax: (609) 777-7739
AltPhone1: (800) 322-8174 (Childfind Birth-21)
Email: terry.harrison@doh.state.nj.us
Website: <http://nj.gov/health/fhs/eis/index.shtml>

New Mexico

Andy Gomm, Program Manager
Family Infant Toddler (FIT) Program
State Department of Health/DDSD
810 San Mateo
Santa Fe, NM 87506
Phone: (505) 476-8975
Fax: (505) 476-8992
AltPhone1: (877) 696-1472
Email: andrew.gomm@state.nm.us
Website: <http://www.nmhealth.org/ddsd/NMFIT/FITIndex.htm>

New York

Brenda Knudson Chouffi, Assistant Director
Bureau of Early Intervention
State Department of Health
Corning Tower Building, Room 287
Empire State Plaza
Albany, NY 12237-0660
Phone: (518) 473-7016
Fax: (518) 486-1090
AltPhone1: (800) 522-5006 ("Growing Up Healthy" 24-Hour Hotline)
AltPhone2: (800) 577-2229 (in NYC)
Email: bjh08@health.state.ny.us
Website: <http://www.nectac.org/shortURL.asp?sURL=NY-partc>

Donna Noyes, Assoc. Director, Clinical Policy
Bureau of Early Intervention
State Department of Health
Corning Tower Building, Room 287
Empire State Plaza
Albany, NY 12237-0660
Email: dmn02@health.state.ny.us
Website: <http://www.nectac.org/shortURL.asp?sURL=NY-partc>

North Carolina

Sherry Franklin, Quality Improvement Unit Manager
Early Intervention Branch
Women's & Children's Health Section, Division of
Public Health
5605 Six Forks Road
1916 Mail Service Center
Raleigh, NC 27699-1916
Phone: (919) 218-2786
Fax: (919) 870-4834
Email: sherry.franklin@dhhs.nc.gov
Website: <http://www.beearly.nc.gov>

North Dakota

Amanda Carlson, Part C Coordinator
Developmental Disabilities Unit Department of Human
Services
1237 W. Divide Ave. Suite #1A
Bismarck, ND 58501
Phone: (701) 328-8936
AltPhone1: (800) 755-8529 (In ND)
Fax: (701) 328-8969
E-mail: arcarlson@nd.gov
Website:
<http://www.nd.gov/dhs/services/disabilities/earlyintervention/>

Northern Mariana Islands

Suzanne Lizama, Coordinator
CNMI Public Schools
PO Box 501370
Saipan, MP 96950
Phone: (670) 237-3029
Fax: (670) 664-3774
AltPhone1: (670) 483-3902
Email: lizamasuzanne@gmail.com

Ohio

Wendy Grove, Interim Part C Coordinator
Bureau of EI Services
State Department of Health
246 North High Street, 5th Floor
PO Box 118
Columbus, OH 43266-0118
Phone: (614) 728-9152
Fax: (614) 728-9163
AltPhone1: (800) 755-4769
Email: wendy.grove@odh.ohio.gov
Website: <http://www.ohiohelpmegrow.org/>

Oklahoma

Cynthia Bernardi-Valenzuela, Part C Co-Coordinator
State Department of Education
Olive Hodge Memorial Education Building
2500 North Lincoln Boulevard
Oklahoma City, OK 73105-4599
Phone: (405) 521-4872
Fax: (405) 522-1590
Email: cynthia_bernardi-valenzuela@sde.state.ok.us
Website: <http://sde.state.ok.us/Curriculum/SpecEd/SoonerStart.html>

Mark Sharp, Part C Co-Coordinator
Special Education Office
State Department of Education
Oliver Hodge Memorial Education Building, 4th Floor
2500 North Lincoln Boulevard
Oklahoma City, OK 73105-4599
Phone: (405) 521-4880
Fax: (405) 522-3503
Email: mark_sharp@sde.state.ok.us
Website: <http://sde.state.ok.us/Curriculum/SpecEd/SoonerStart.html>

Oregon

Nancy Johnson-Dorn, Part C Coordinator
Office of Special Education
State Department of Education
255 Capitol Street NE
Salem, OR 97310-0203
Phone: (503) 947-5703
Fax: (503) 373-7968
AltPhone1: (503) 378-2892
Email: nancy.johnson-dorn@state.or.us
Website: <http://www.ode.state.or.us/search/results/?id=252>

Pennsylvania

Maureen Cronin, Part C Coordinator
Bureau of Early Intervention Services
Office of Child Development & Early Learning
Department of Public Welfare & Education
333 Market Street
Harrisburg, PA 17105-2675
Phone: (717) 783-7213
Fax: (717) 772-0012
AltPhone1: (800) 692-7288
Email: mcronin@state.pa.us
Website: <http://www.nectac.org/shortURL.asp?sURL=PA-partc>

Puerto Rico

Naydamar Perez de Otero, Part C Coordinator
Part C Program
Office of the Secretary
State Department of Health
Call Box 70184
San Juan, PR 00936
Phone: (787) 274-5659
Fax: (787) 274-3301
Email: naydamar@salud.gov.pr
Website: <http://www.salud.gov.pr/Pages/default.aspx>

Rhode Island

Brenda DuHamel, Part C Coordinator
Department of Human Services
Center for Child and Family Health
74 West Road, Building 74
Cranston, RI 02920
Phone: (401) 462-0318
Fax: (401) 462-6253
Email: bduhamel@dhs.ri.gov
Website: <http://www.nectac.org/shortURL.asp?sURL=RI-partc>

South Carolina

Kristie Musick, Part C Coordinator
South Carolina First Steps to School Success
1300 Sumter Street, Suite 100
Columbia, SC 29201-3340
Phone: (803) 734-8068
Fax: (803) 734-1431
Email: kmusick@scfirststeps.org
Website: <http://www.scfirststeps.org/babynet.html>

South Dakota

Susan Sheppick, Part C Coordinator
State Department of Education
Birth to 3 Connections
700 Governors Drive
Pierre, SD 57501
Phone: (605) 773-4478
Fax: (605) 773-3782
Email: susan.sheppick@state.sd.us
Website: <http://doe.sd.gov/oess/Birthto3/index.asp>

Tennessee

Linda Hartbarger, Part C Coordinator
Early Childhood Services/Division of Special Education
State Department of Education
Andrew Johnson Tower, 7th Floor
710 James Robertson Parkway
Nashville, TN 37243-0375
Phone: (615) 253-5032
Fax: (615) 532-9412
Email: linda.hartbarger@tn.gov
Website: <http://www.tn.gov/education/teis/>

Texas

Kim Wedel, Assistant Commissioner
Texas Early Childhood Intervention Program
Department of Assistive and Rehabilitative Services
Brown-Heatly State Office Building
4900 North Lamar
Austin, TX 78751-2399
Phone: (512) 424-6754
Fax: (512) 424-6749
AltPhone1: (800) 628-5115 (Information & Referral)
Email: kim.wedel@dars.state.tx.us
Website: <http://www.dars.state.tx.us/ecis/index.shtml>

Utah

Susan Ord, Part C Coordinator
Baby Watch Early Intervention
State Department of Health
PO Box 144720
Salt Lake City, UT 84114-4720
Phone: (801) 584-8441
Fax: (801) 584-8496
AltPhone1: (800) 961-4226
Email: sord@utah.gov
Website: <http://www.utahbabywatch.org>

Vermont

Terri Edgerton, Part C Coordinator
Children's Integrated Services
Child Development Division
103 South Main Street, DCF - 2 North
Waterbury, VT 05671-2901
Phone: (802) 241-3622
Fax: (802) 241-1220
Email: terri.edgerton@ahs.state.vt.us
Website:
http://dcf.vermont.gov/cdd/cis/IDEA_Part_C_early_intervention

Virgin Islands

Renée Joseph Rhymer, Director
Infant/Toddler Program
Department of Health
Elaineco Complex #78-1, 2, 3
St. Thomas, VI 00802
Phone: (340) 777-8804
Fax: (340) 774-2820
Email: birthto3usvi@viaccess.net
Website: <http://www.nectac.org/shortURL.asp?sURL=VI-partC>

Virginia

Part C Coordinator Position Vacant
Infant and Toddler Connection of VA
Department of MH/MR/SA Services
PO Box 1797
Richmond, VA 23218-1797
Phone: (804) 786-4868
Fax: (804) 371-7959
AltPhone1: (800) 234-1448 (Central Directory for Early Intervention Services)
Email: maryann.discenza@dbhds.virginia.gov
Website: <http://www.infantva.org/>

Washington

Karen Walker, Part C Coordinator
Program Administrator
Department of Early Learning
Early Support for Infants and Toddlers Program
PO Box 40970
Olympia, WA 98504-0970
Phone: (360) 725-3516
Fax: (360) 725-3523
Email: karen.walker@del.wa.gov
Website: <http://del.wa.gov/development/esit/Default.aspx>

West Virginia

Pam Roush, Part C Coordinator
WV Birth to Three
Office of Maternal and Child Health
Department of Health and Human Resources
350 Capital Street, Room 427
Charleston, WV 25301
Phone: (304) 558-6311
Fax: (304) 558-7050
AltPhone1: (304) 558-5388
AltPhone2: (800) 642-9704 (in WV only)
Email: pam.s.roush@wv.gov
Website: <http://www.wvdhhr.org/birth23/>

Wisconsin

Darsell Johns, Part C Coordinator
Birth to 3 Program
Bureau of Long-Term Support
1 West Wilson Street, Room 418
PO Box 7851
Madison, WI 53707-7851
Phone: (608) 267-3270
Fax: (608) 261-6752
Email: darsell.johns@dhs.wisconsin.gov
Website: <http://dhs.wisconsin.gov/bdds/birthto3/>

Wyoming

Christine DeMer, Part C Coordinator
Division of Developmental Disabilities
State Department of Health
186 East Qwest Building
6101 Yellowstone Road
Cheyenne, WY 82002
Phone: (307) 777-7115
Fax: (307) 777-3337
Email: christine.demers@health.wyo.gov
Website: <http://wdh.state.wy.us/ddd/earlychildhood/index.html>

Chairs of the State and Jurisdictional Interagency Coordinating Councils (ICCs) Under Part C of IDEA

updated October 11, 2011

available at <http://www.nectac.org/contact/iccchair.asp>

Alabama

Karen Stokes, ICC Chair
The Arc of Shelby County, Inc.
1960 H Chandalar Drive
Pelham, AL 35124
Phone: (205) 664-9313
Fax: (205) 664-1934
Email: karenstokes@bellsouth.net

Alaska

Eric Gebhart, ICC Co-Chair
PO Box 518
Nenana, AK 99760
Phone: (907) 832-5464
Email: egebhart@hotmail.com
Website:
<http://www.hss.state.ak.us/gcdse/committees/eic/default.htm>

Amy Simpson, ICC Co-Chair
Programs for Infants and Children
161 Klevin Street, Suite 103
Anchorage, AK 99508
Phone: (907) 550-3024
Fax: (907) 563-3172
Email: asimpson@picak.org
Website:
<http://www.hss.state.ak.us/gcdse/committees/eic/default.htm>

American Samoa

Maryann Tulafano, ICC Chair
LBJ Tropical Medical Center
American Samoa Hospital Authority
Government of American Samoa
Pago Pago, AS 96799
Phone: (684) 633-4929
Fax: (684) 633-2167

Arizona

Kristina Park, ICC Chair
10366 E Laguna Azul Avenue
Mesa, AZ 85209
Phone: (480) 940-5276
Email: park.kristina@gmail.com
Website: <https://www.azdes.gov/main.aspx?menu=98&id=2760>

Arkansas

Eileen Cole, ICC Chair
Rainbow of Challenges, Inc.
Children's Services
P O Box 1540
500 South Main Street
Hope, AR 71802
Phone: (870) 777-4501 x39
Fax: (870) 777-7680
Email: eileencole@rainbowofchallenges.org

California

Theresa Rossini, Acting ICC Chair
504 Barrinsham Lane
Modesto, CA 95350
Phone: (209) 544-2364
Email: jross1223@aol.com
Website: <http://www.dds.ca.gov/EarlyStart/ICCOverview.cfm>

Colorado

Deeann Westfall- 4741
ICC Co-Chair
6826 Antigua Drive, #4
Fort Collins, CO 80525
Email: deeannwestfall@hotmail.com
Website: <http://www.eicolorado.org>

Jim Brennan, ICC Co-Chair
3553 S. Waco Way
Aurora, CO 80013
Phone: (303) 766-3578
Email: jimandv@comcast.net
Website: <http://www.eicolorado.org>

Connecticut

Mark Greenstein, ICC Chair
University of CT School of Medicine
Department of Pediatrics (1-F)
282 Washington Street
Hartford, CT 06106
Phone: (860) 545-9280
Fax: (860) 545-9159
Email: mgreens@ccmckids.org
Website: <http://www.birth23.org/aboutb23/SICC.html>

Patrick Ruddy, ICC Co-Chair
66 Carter Drive
Tolland, CT 06084
Phone: (860) 798-5089
Email: pjruddy@gmail.com
Website: <http://www.birth23.org/aboutb23/SICC.html>

Delaware

Michelle Lamers, ICC Chair
205 E. Bradford Court
Middletown, DE 19709
Phone: (302) 831-6608
Fax: (302) 831-4690
Email: lammersmm@aol.com

District of Columbia

Position Vacant, ICC Chair
Office of the State Superintendent of Education (OSSE)
Division of Special Education
810 First Street, NE, 5th Floor
Washington, DC 20002
Phone: (202) 727-5853
Fax: (202) 724-7230

Florida

Roni Bader-Tables, Interim ICC Chair
Miami-Dade County Public Schools
Prekindergarten Program for Children with Disabilities
5555 SW 93 Avenue
Miami, FL 33165
Phone: (305) 271-5701
Fax: (305) 598-5253
Email: rbader-tab@dadeschools.net
Website: <http://www.floridaicc.com/index.htm>

Georgia

Ruth Cantor, ICC Coordinator
Babies Can't Wait
Office of Children and Youth with Special Needs, MCH
Program
Division of Public Health
2 Peachtree Street, N.W. Suite 11-216
Atlanta, GA 30303-3142
Phone: (404) 657-4395
Fax: (404) 657-2763
Email: rfcantor@dhr.state.ga.us
Website: <http://www.health.state.ga.us/programs/bcw/icc.asp>

Guam

Elaine Eclavea, ICC Co-Chair
University of Guam CEDDERS
Health, Wellness, and Prevention
UOG Station
Mangilao, GU 96923
Phone: (671) 735-2466
Fax: (671) 734-2448
Email: eeclavea@ite.net

Florence Blas- 5006
ICC Vice Chair
Mangilao, GU 96923
Phone: (671) 477-5400
Email: florence.blas@dphss.guam.gov

Hawaii

Leolinda Parlin, ICC Chair
2604 Pauoa Road
Honolulu, HI 96813
Phone: (808) 524-8313
Fax: (808) 531-3595
AltPhone1: (808) 282-6348 (Cell)
Email: leolinda@resqconsultants.com

Michael Fahey, ICC Vice Chair
Good Beginnings Alliance
33 S. King St. #200
Honolulu, HI 96813
Phone: (808) 531-5502
Fax: (808) 531-5702
AltPhone1: (808) 284-9104 (Cell)
Email: mfahey@goodbeginnings.org

Idaho

Amber Seipert, ICC Co-Chair
605 Vista Avenue
Lewiston, ID 83501
Phone: (208) 798-0129
Email: aseipert@gmail.com
Website: <http://www.nectac.org/shortURL.asp?sURL=ID-icc>

Illinois

Beatrice Nichols, ICC Chair
9307 South Longwood Drive
Chicago, IL 60620
Phone: (312) 743-1635
Fax: (312) 743-0400
Email: beatrice.nichols@cityofchicago.org

Indiana

Susan Lightle, Interim ICC Chair
Indiana Head Start Collaboration Office
402 W. Washington Street, Room W-361
Indianapolis, IN 46204
Phone: (317) 233-6837
Email: susan.lightle@fssa.in.gov
Website: <http://www.in.gov/fssa/ddrs/2823.htm>

Iowa

Heather Moorman- 5577
ICC Vice Chair
509 W. Monroe Street
Corydon, IA 850060
Phone: (641) 344-3495
Email: hmmoorman@yahoo.com
Website: <http://www.nectac.org/shortURL.asp?sURL=IA-ICC>

Julie Hahn- 4360
ICC Chair
5441 Harwood Drive
Des Moines, IA 50312
Phone: (515) 237-3879
Email: juls_hawk@yahoo.com
Website: <http://www.nectac.org/shortURL.asp?sURL=IA-ICC>

Kansas

Eva Horn, ICC Chair
University of Kansas
Joseph R. Pearson Hall, Room 401
122 W. Campus Road
Lawrence, KS 66045-3101
Phone: (785) 864-0615
Email: evahorn@ku.edu
Website: <http://www.kansasicc.org>

Kentucky

Elizabeth Schumacher, ICC Chair
University of Louisville
Department of Pediatrics
601 S Floyd Street, Suite 801
Louisville, KY 40202
Phone: (502) 852-7049
Fax: (502) 852-0135
Email: eschumacher@louisville.edu

Louisiana

Dan Underwood, ICC Chair
23409 Brookforest Road
Abita Springs, LA 70420
Phone: (504) 523-7325
Email: danunderw1@aol.com

Maine

Lori Prestridge, ICC Chair
Mountain View Youth Development Center
1182 Dover Road
Charleston, ME 04422
Phone: (207) 285-0782
Fax: (207) 285-0790
Email: lori.prestridge@maine.gov
Website: <http://www.maine.gov/education/speced/macecdhome.htm>

Maryland

Kelli Nelson, ICC Co-Chair
761 Sussex Court
Eldersburg, MD 21784
Phone: (410) 659-7701 x122
Email: kelli@belle2gabby.com
Website: <http://www.nectac.org/shortURL.asp?sURL=MD-icc>

Brenda Hussey-Gardner, ICC Co-Chair
University of Maryland School of Medicine – Pediatrics
29 South Greene Street, GS110
Baltimore, MD 21201
Phone: (410) 328-8782
Fax: (410) 328-1076
Email: bhussey@peds.umaryland.edu
Website: <http://www.nectac.org/shortURL.asp?sURL=MD-icc>

Massachusetts

Jennifer O'Leary, ICC Co-Chair
14 Bolske Avenue
Maynard, MA 01754
Phone: (978) 897-2705
Email: jenniferoleary1@verizon.net
Website: <http://www.eiplp.org/icc.html>

Margaret Mahoney, ICC Co-Chair
Thom Anne Sullivan Center
126 Phoenix Avenue
Lowell, MA 01852
Phone: (978) 453-8331 x1122
Fax: (978) 453-9254
Email: mmahoney@thomchild.org
Website: <http://www.eiplp.org/icc.html>

Michigan

Julie Lajos, ICC Co-Chair
15730 Mulberry
Macomb Township, MI 48042
Email: jwilliams@misd.ne
Website: http://www.michigan.gov/mde/0,1607,7-140-6530_6809-127141--,00.html

Mark Larson, ICC Co-Chair
Higher Education/Personnel Preparation
1525 Cherboneau, Unit 17B
Detroit, MI 48207
Phone: (313) 577-0903
Email: markjlarsen@wayne.edu
Website: http://www.michigan.gov/mde/0,1607,7-140-6530_6809-127141--,00.html

Minnesota

Barbara Wolfe, Acting ICC Chair
Higher Education Faculty Representative
University of St. Thomas
St. Paul, MN 55105
Phone: (651) 962-4390
Email: blwolfe@stthomas.edu
Website: <http://www.nectac.org/shortURL.asp?sURL=MN-icc>

Mississippi

Dean Kirby, ICC Co-Chair
PO Box 54099
Pearl, MS 39288
Phone: (601) 939-5968
Fax: (601) 939-0194
Email: dkirby@senate.ms.gov

Robin Wilkerson, ICC Co-Chair
School of Nursing
University of MS Medical Center
2500 N State Street
Jackson, MS 39216
Phone: (601) 984-6253
Fax: (601) 815-9285
Email: rwilkerson@son.umsmed.edu

Missouri

Wendy Witcig, ICC Co-Chair
Executive Director, Triality, Inc.
11320 North Madison Avenue
Kansas City, MO 64155
Phone: (816) 694-3384
Fax: (816) 734-9271
Email: wwitcig@trialityinc.org

Cori Tharp, ICC Co-Chair
624 S. Kisner Circle
Independence, MO 64056
Phone: (819) 914-3067
Email: coritharp@rocketmail.com

Montana

Diana Colgrove, ICC Chair
5868 Sinclair Creek Road
PO Box 630
Eureka, MT 59917
Phone: (406) 889-5590
Fax: (630) 604-0002
Email: diana@alumni.calpoly.edu
Website: <http://www.dphhs.mt.gov/fssac/>

Novelene Martin, ICC Vice Chair
Rt. 2, Box 3115
Miles City, MT 59301
Email: ndmartin@midrivers.com
Website: <http://www.dphhs.mt.gov/fssac/>

Nebraska

Heather Gill, ICC Chair
Educational Service Unit #16
PO Box 915
Ogallala, NE 69153
Phone: (308) 284-3164
Fax: (308) 284-3164
Email: hgill@esu16.org
Website: <http://www.education.ne.gov/ecicc/>

Nevada

Ann Bingham, ICC Co-Chair
University of Nevada, Reno
MS 299
Reno, NV 89557
Phone: (775) 682-7863
Email: abingham@unr.edu
Website: http://health.nv.gov/BEIS_NICC.htm

New Hampshire

Michelle Lewis, ICC Chair
Parent Information Center
PO Box 2405
Concord, NH 03302-2405
Phone: (603) 224-7005
Fax: (603) 224-4365
Email: mlewis@picnh.org

New Jersey

Warren Moore, ICC Vice Chair
Executive Vice President & CEO
Children's Specialized Hospital
200 Somerset Street
New Brunswick, NJ 08901
Phone: (732) 258-7051
Fax: (732) 258-7210
Email: wmoore@children-specialized.org
Website: <http://nj.gov/health/fhs/eis/index.shtml>

Denise Murray, ICC Vice Chair
St. John of God Community Services
Early Intervention Program
1145 Delsea Drive
Westville Grove, NJ 08093
Phone: (856) 848-4700 x141
Fax: (856) 852-9066
Email: dmurray@sjogcs.org
Website: <http://nj.gov/health/fhs/eis/index.shtml>

New Mexico

Lisa Chavez, ICC Co-Chair
#8 CR 4410
Blanco, NM 87412
Phone: (505) 632-7649
Email: emailus@acnet.com
Website: <http://www.nmhealth.org/ddsd/NMFIT/ICC/ICC.htm>

Karen Lucero- 5770
ICC Co-Chair
7010 Phoenix Avenue, NE, Suite 709
Albuquerque, NM 87110
Phone: (505) 550-2643
Email: kl_inspirations@mindspring.com
Website: <http://www.nmhealth.org/ddsd/NMFIT/ICC/ICC.htm>

New York

ICC Chair Position Vacant
Neurodevelopmental Behavioral Pediatrics
NYU School of Medicine
530 First Avenue, Suite 3A
New York, NY 10016
Phone: (212) 562-4313

Talina Jones, ICC Vice Chair
225 Whittier Avenue
Syracuse, NY 13204
Phone: (315) 424-1907
Email: tajcemom@aol.com

North Carolina

LaTonya McIver, ICC Co-Chair
C/O Early Intervention Branch
1916 Mail Service Center
Raleigh, NC 27699-1916
Phone: (252) 916-6714
Fax: (919) 870-4834
Email: latonyam-yellock@live.com
Website: <http://www.beearly.nc.gov/index.php/icc/icc>

Theresa Flynn, ICC Co-Chair
7709 Sandy Bottom Way
Raleigh, NC 27613
Phone: (919) 250-3762
Fax: (919) 870-4834
Email: tmmflynn@yahoo.com
Website: <http://www.beearly.nc.gov/index.php/icc/icc>

North Dakota

Jill Staudinger, ICC Chair
KIDS Program
2493 4th Avenue, W, Suite F
Dickinson, ND 58601
Phone: (701) 483-4394
Email: jstaudinger@nd.gov
Website: <http://www.ndearlyintervention.org>

Joe Elsberry, ICC Vice Chair
3 Speed Early Intervention
818 N. 10th Street
Bismarck, ND 58501
Phone: (701) 471-7534
Email: jelsberry@nd.gov
Website: <http://www.ndearlyintervention.org>

Northern Mariana Islands

Margarita Aldan, ICC Chair
Department of Public Health
Maternal and Child Health
PO Box 500409
Saipan, MP 96950
Email: mtaldan@gmail.com

Ohio

Kim Johnson, ICC Co-Chair
Mahoning County Education Service Center
100 DeBartolo Place, Suite 220
Youngstown, OH 44512-7019
Phone: (330) 965-7912
Email: k.johnson@mahoningesc.org
Website:
<http://www.ohiohelpmegrow.org/aboutus/council/HMGCouncil.aspx>

Kim Travers, ICC Co-Chair
905 Hampton Drive
Macedonia, OH 44056
Phone: (330) 908-3107
Email: kntravers@windstream.net
Website:
<http://www.ohiohelpmegrow.org/aboutus/council/HMGCouncil.aspx>

Oklahoma

Heather Pike, ICC Chair
Oklahoma Family Network
PO Box 21072
Oklahoma City, OK 73156-1072
Phone: (405) 401-7612
Fax: (405) 271-4511
Email: heather-pike@ouhsc.edu
Website: <http://www.okkids.org>

Oregon

Claudia Bingham, ICC Co-Chair
Department of Human Services
800 NE Oregon Street #825
Portland, OR 97232-2142
Phone: (503) 731-3461 x529
Email: claudia.w.bingham@state.or.us
Website: <http://www.ode.state.or.us/groups/advisorycouncils/sicc/>

Jody Mumford, ICC Chair
10450 NW Flotoma Drive
Portland, OR 97229
Phone: (503) 292-5437
Email: wpmumford@comcast.net
Website: <http://www.ode.state.or.us/groups/advisorycouncils/sicc/>

Palau

Gillian Johannes, ICC Chair
Special Education Advisory Council
Republic of Palau
PO Box 716
Koror, Palau, PW 96940
Phone: (680) 488-2318
Fax: (680) 488-1211
AltPhone1: (680) 587-3632

Pennsylvania

Kurt Kondrich, ICC Co-Chair
640 Aljo Drive
Pittsburgh, PA 15241
Phone: (412) 951-9117
Email: kkondrich@eiskids.com
Website:
<http://www.pattan.net/category/About/Partners/Single/?id=13>

Anne Marie Reager, ICC Co-Chair
Child Development, Inc.
2880 Pottsville-Minersville Highway, Suite 210
Minersville, PA 17954
Phone: (570) 385-3985 x230
Email: amreager@childdevelop.org
Website:
<http://www.pattan.net/category/About/Partners/Single/?id=13>

Puerto Rico

Ana Navarro, ICC Chair
Calle Francisco Sein #503
Floral Park
Hato Rey, PR 00917
Phone: (787) 759-6546
Fax: (787) 759-6719

Rhode Island

Lisa Landry-Testa, ICC Chair
Lincoln, RI
Phone: (401) 726-5081
Email: LeeLandry7@aol.com
Website: <http://www.ripin.org/>

Benedict Lessing, ICC Vice-Chair
Family Resources Community Action
245 Main Street
Woonsocket, RI 02895
Phone: (401) 766-0900
Email: bllessing@famresri.org
Website: <http://www.ripin.org/>

South Carolina

Daniel Varat, ICC Chair
SC Senate
PO Box 142
Columbia, SC 29201
Phone: (803) 212-6320
Fax: (803) 212-6323
Email: dannyvarat@charter.net
Website: <http://www.scfirststeps.org/ICC.html>

South Dakota

David Calhoon, ICC Chair
1200 University Street, Unit 9057
Spearfish, SD 57799
Phone: (605) 642-6112
Fax: (605) 642-6032
Email: davidcalhoon@bhsu.edu
Website: <http://doe.sd.gov/oess/birthto3/index.asp>

Tennessee

Martha Herndon, ICC Chair
Department of Family & Consumer Sciences
University of Tennessee, Martin
340 Gooch Hall
Martin, TN 38238
Phone: (731) 881-7112
Fax: (731) 587-7106
Email: mherndon@utm.edu
Website: <http://tennessee.gov/education/teis/icc.shtml>

Texas

Pamela Perez, ICC Chair
El Paso MHMR
1477 Lomaland, Suite E-7
El Paso, TX 79935
Phone: (915) 599-6690
Fax: (915) 592-7168
Email: pperez@epmhmr.org
Website: <http://www.dars.state.tx.us/ecis/advisorycommittee.shtml>

Utah

Debbie Ballard
Jordan Child Development Center
2827 W. 13400 S.
Riverton, UT 84065
Phone: (801) 567-8512
Fax: (801) 567-8523
Email: dballardcdc@yahoo.com
Website: <http://www.utahbabywatch.org/icc/index.htm>

Joyce Dolcourt
Legislative Coalition for People with Disabilities
509 Northmont Way
Salt Lake City, UT 84103
Phone: (801) 718-3013
Email: joyce@xmission.com
Website: <http://www.utahbabywatch.org/icc/index.htm>

Ginger West, Parent Representative
930 McKinley Way
St. George, UT 84790
Phone: (435) 229-7520 (Cell)
Email: bearden917@aol.com
Website: <http://www.utahbabywatch.org/icc/index.htm>

Vermont

James Austin, ICC Co-Chair
15 Center Bay Road
Alburgh, UT 05440
Phone: (802) 370-0295
Email: tannis01@pivot.net
Website: <http://def.vermont.gov/cdd/icc>

Virgin Islands

Maureen Moorehead, ICC Chair
PO Box 5622
St. Croix, VI 00823
Phone: (340) 773-7997
Fax: (340) 773-4640
Email: mwmoorehead@earthlink.net

Virginia

Dr. Lissa Power-deFur
Longwood University
201 High Street
Farmville, Virginia 23909
Phone: (434) 395-2369
Email: powerdefurea@longwood.edu
Website: <http://www.infantva.org/wkg-VICC.htm>

Washington

ICC Chair Position Vacant
c/o Department of Early Learning (DEL)
Early Support for Infants and Toddlers (ESIT) Program
PO Box 40970
Olympia, WA 98504-0970
Phone: (360) 725-3514
Fax: (360) 725-3523
Email: linda.jennings@del.wa.gov
Website: <http://del.wa.gov/development/esit/councils.aspx>

West Virginia

Mary McCartney, Acting ICC Chair
RR 1, Box 212
Montrose, WV 26283
Phone: (304) 823-2514 (Home)
AltPhone1: (304) 823-1245 (Work)
Email: bswdpe@yahoo.com
Website: <http://www.wvdhhr.org/wvicc/>

Andrea Campbell, ICC Vice Chair
242 Lynwood Circle
Princeton, WV 24740
Phone: (304) 384-5362
Fax: (304) 384-5398
Email: acampbell@concord.edu
Website: <http://www.wvdhhr.org/wvicc/>

Wisconsin

Norma Vrieze, Acting ICC Chair
St. Croix County Birth to 3
St. Croix County Department of Health and Human
Services
1445 N. Fourth Street
New Richmond, WI 54017
Phone: (715) 246-8248
Fax: (715) 246-8439
Email: normav@co.saint-croix.wi.us
Website: <http://b3icc.state.wi.us/index.htm>

Wyoming

Susan Wiley, ICC Chair
WY Early Intervention Council
100 Highway 433
Manderson, WY 82432
Phone: (307) 765-2371
Email: susan.wiley@health.wyo.gov

Contact List of State ICC Staff

updated September 2011

available at <http://www.nectac.org/contact/iccstaff.asp>

Alaska

Millie Ryan, Executive Director
Governor's Council on Disabilities and Special
Education
3601 C Street, Suite 740
PO Box 240249
Anchorage, AK 99524-0249
Phone: (907) 269-8994
Fax: (907) 269-8995
Email: millie.ryan@alaska.gov

Jennifer Jones, ICC Staff
Governor's Council on Disabilities and Special
Education
State of Alaska
3601 C Street, Suite 740
Anchorage, AK 99503
Phone: (907) 269-8462
Fax: (907) 269-8995
AltPhone1: (888) 269-8990
Email: jennifer.jones@alaska.gov
Website:
<http://www.hss.state.ak.us/gcdse/committees/eic/default.htm>

Arizona

Karie Taylor, ICC Staff
Arizona Early Intervention Program
Department of Economic Security
3839 North 3rd Street, Suite 304
Site Code #801 A-6
Phoenix, AZ 85005
Phone: (602) 532-9960
Fax: (602) 200-9820
AltPhone1: (888) 439-5609 (in AZ)
Email: ktaylor@azdes.gov
Website:
<https://egov.azdes.gov/CMSInternet/main.aspx?menu=98&id=2808>

Arkansas

Tracey Shine, ICC Staff
Department of Health and Human Services
Division of Developmental Disabilities
PO Box 1437, Slot 380
Little Rock, AR 72203-1437
Phone: (501) 683-4358
Fax: (501) 683-2536
AltPhone1: (501) 371-1370
Email: tracey.shine@arkansas.gov
Website: <http://www.arkansas.gov/dhs/ddds/FirstConn/index.html>

California

Patric Widmann, ICC Staff
Early Start State Services Section
Children and Family Services Branch
Department of Developmental Services
1600 9th Street, Room 330, MS 3-8
Sacramento, CA 95814
Phone: (916) 654-3722
Fax: (916) 654-3255
Email: pat.widmann@dds.ca.gov
Website: <http://www.dds.ca.gov/EarlyStart/ICCOverview.cfm>

Connecticut

Anna G. Hollister, Educational Projects Coordinator
Connecticut Birth to Three System
Department of Developmental Services
460 Capitol Avenue
Hartford, CT 06106-1308
Phone: (860) 418-8716
Fax: (860) 418-6003
Email: anna.hollister@ct.gov
Website: <http://www.birth23.org>

Florida

Catherine Duncan, ICC Staff
Early Steps State Office
Children's Medical Services
4052 Bald Cypress Way, Bin A06
Tallahassee, FL 32399-1707
Phone: (850) 508-6842
Fax: (850) 921-8138
Email: catherine_duncan@doh.state.fl.us
Website: <http://www.floridaicc.com/index.htm>

K. Renee Jenkins, ICC Staff
CMS Infants & Toddlers EI Program
4052 Bald Cypress Way, Bin #A06
Tallahassee, FL 32399-1707
Phone: (850) 245-4444 x2233
Fax: (850) 414-7350
Email: renee_jenkins@doh.state.fl.us

Georgia

Ruth Cantor, ICC Staff
Babies Can't Wait
Office of Children and Youth with Special Needs, MCH
Program
Division of Public Health
2 Peachtree Street, N.W. Suite 11-216
Atlanta, GA 30303-3142
Phone: (404) 657-4395
Fax: (404) 657-2763
Email: rfcantor@dhr.state.ga.us
Website: <http://www.health.state.ga.us/programs/bcw/icc.asp>

Indiana

John Pennycuff, ICC Staff
ICAP Head Start
615 SR 38 W
PO Box 449
New Castle, IN 47362
Phone: (765) 529-4403
Fax: (765) 593-2510
Email: jpennycuff@icapcaa.org

Iowa

Aryn Kruse, ICC Staff/Facilitator
Early ACCESS (IDEA/Part C)
400 E. 14th Street, Grimes Building
Des Moines, IA 50319-0146
Phone: (515) 281-5751
Email: aryn.kruse@iowa.gov

Kansas

Doug Bowman, ICC Executive Coordinator
Infant Toddler Program
Department of Health and Environment
1000 SW Jackson, Suite 220
Topeka, KS 66612-1274
Phone: (785) 296-1294
Fax: (785) 296-8616
Email: dbowman@kdhe.state.ks.us
Website: <http://www.kansasicc.org>

Louisiana

Position Vacant, ICC Staff
Office of the Governor
PO Box 1509
Baton Rouge, LA 70821-1509
Phone: (225) 219-7560
Fax: (225) 219-7561

Maine

Pam Rosen, ICC Staff
Maine Department of Education
23 State House Station
Augusta, ME 04333-0023
Phone: (207) 624-6648
Fax: (207) 624-6651
Email: Pam.Rosen@maine.gov

Maryland

Sherea Makle, Staff Specialist/SICC Liaison
State Department of Education
200 W. Baltimore Street, 9th Floor
Baltimore, MD 21201
Phone: (410) 767-0943
Email: smakle@msde.state.ms.us
Website: <http://www.nectac.org/shortURL.asp?sURL=MD-icc>

Massachusetts

Darla Gundler, ICC Staff
Department of Public Health
23 Service Center
Northampton, MA 01060
Phone: (413) 586-7525 x1157
Fax: (413) 784-1037
Email: darla.gundler@state.ma.us
Website: <http://www.eiplp.org/icc.html>

Michigan

Barbara Schinderle, ICC Staff Liaison
Michigan Department of Education
Office of Early Childhood Education and Family
Services
608 West Allegan
Lansing, MI 48909
Phone: (517) 241-2591
Fax: (517) 373-7504
Email: schinderleb@michigan.gov

Nebraska

Terry Rohren, Facilitator
Early Childhood Training Center
4939 South 110th Street
Omaha, NE 68128-5722
Phone: (402) 557-6894
Email: terry.rohren@nebraska.gov
Website: <http://www.education.ne.gov/ecicc/index.html>

Mark Smith
Family Partners
985450 Nebraska Medical Center
Omaha, NE 68198-5450
Phone: (402) 559-5744
Website: <http://www.education.ne.gov/ecicc/index.html>

Connie Shockley
Family Partners
3135 N. 93rd Street
Omaha, NE 68134
Phone: (402) 934-1479
Email: cshockley@pti-nebraska.org
Website: <http://www.education.ne.gov/ecicc/index.html>

New Mexico

Suzanne Pope, ICC Coordinator/Chief Liaison
Family Infant Toddler Program
New Mexico Department of Health
PO Box 22123
Santa Fe, NM 87502-6110
Phone: (505) 954-1298
AltPhone1: (505) 362-7618 (Cell)
Email: supope@msn.com

North Carolina

Laura Curtis, Coordinator
Early Intervention Branch, Women's & Children's Health
Section
Division of Public Health
Department of Health & Human Services
1916 Mail Service Center
5605 Six Forks Road
Raleigh, NC 27699-1916
Phone: (919) 707-5532
Fax: (919) 870-4834
Email: laura.curtis@dhhs.nc.gov

North Dakota

Roxane Romanick, State Family Liaison
NE Early Intervention Program
830 Longhorn Drive
Bismarck, ND 58503
Phone: (701) 527-4645
Fax: (701) 323-4405
Email: rromanick@nd.gov
Website: <http://www.nectac.org/shortURL.asp?sURL=ND-icc>

Ohio

Kathy Arnold, HMG Advisory Council Coordinator
State Department of Health
Bureau of Early Intervention Services
246 N. High Street, 5th Floor
Columbus, OH 43215
Phone: (614) 728-6784
Fax: (614) 728-9163
Email: kathys.arnold@odh.ohio.gov
Website:
<http://www.ohiohelpmegrow.org/aboutus/council/HMGCouncil.aspx>

Oklahoma

Treasa Lansdowne, ICC Staff
Oklahoma Commission on Children and Youth
SoonerStart Early Childhood Intervention Program
1111 N. Lee Avenue, Suite 500
Oklahoma City, OK 73103
Phone: (405) 606-4918
Email: tlansdowne@okkids.org
Website: <http://www.okkids.org/>

Pennsylvania

Andrea Algatt, Program Specialist
Office of Child Development and Early Learning
Bureau of Early Intervention Services
333 Market Street, 6th Floor
Harrisburg, PA 17126-0333
Email: aalgatt@state.pa.us
Website: <http://www.nectac.org/shortURL.asp?sURL=PA-icc>

Utah

Lorna Ward, Health Program Specialist II
Baby Watch Early Intervention
PO Box 144720
44 Mario Capecchi Drive
Salt Lake City, UT 84113
Fax: (801) 584-8496
Phone: (801) 584-8299
Email: ldward@utah.gov

Vermont

Leslie Mitrano, ICC Staff
CDD/CIS/EI – 2 North
103 S. Main Street
Waterbury, VT 05671-2901
Phone: (802) 241-4057
Fax: (802) 241-1220
Email: leslie.mitrano@ahs.state.vt.us
Website: <http://def.vermont.gov/cdd/icc>

Virginia

Karen Durst, Technical Assistance Consultant
Infant & Toddler Connection of VA
Department of Mental Health, Mental Retardation and
Substance Abuse Service
Jefferson Building, 9th Floor
1220 Bank Street, Box 1797
Richmond, VA 23218-1797
Phone: (804) 786-9844
Email: karen.durst@co.dmhmrzas.virginia.gov
Website: <http://www.infantva.org>

Washington

Linda Jennings, ICC Staff
Department of Early Learning (DEL)
Early Support for Infants & Toddlers (ESIT) Program
PO Box 40970
Olympia, WA 98504
Phone: (360) 725-3514
Fax: (360) 725-3523
Email: linda.jennings@del.wa.gov
Website: <http://del.wa.gov/development/esit/councils.aspx>

West Virginia

Sheila Zickefoose, Council Director
WV Early Intervention Coordinating Council
99 Edmiston Way, Suite 201
Buckhannon, WV 26201
Phone: (304) 471-3443
Fax: (304) 471-3441
Email: szickefoose@rvcds.org
Website: <http://www.wvdhhr.org/wvice/>