



Using Family Survey Data for Program Improvement

Measuring Child and Family Outcomes Conference

Bethesda, MD

June 23, 2009

Don Bailey, RTI International

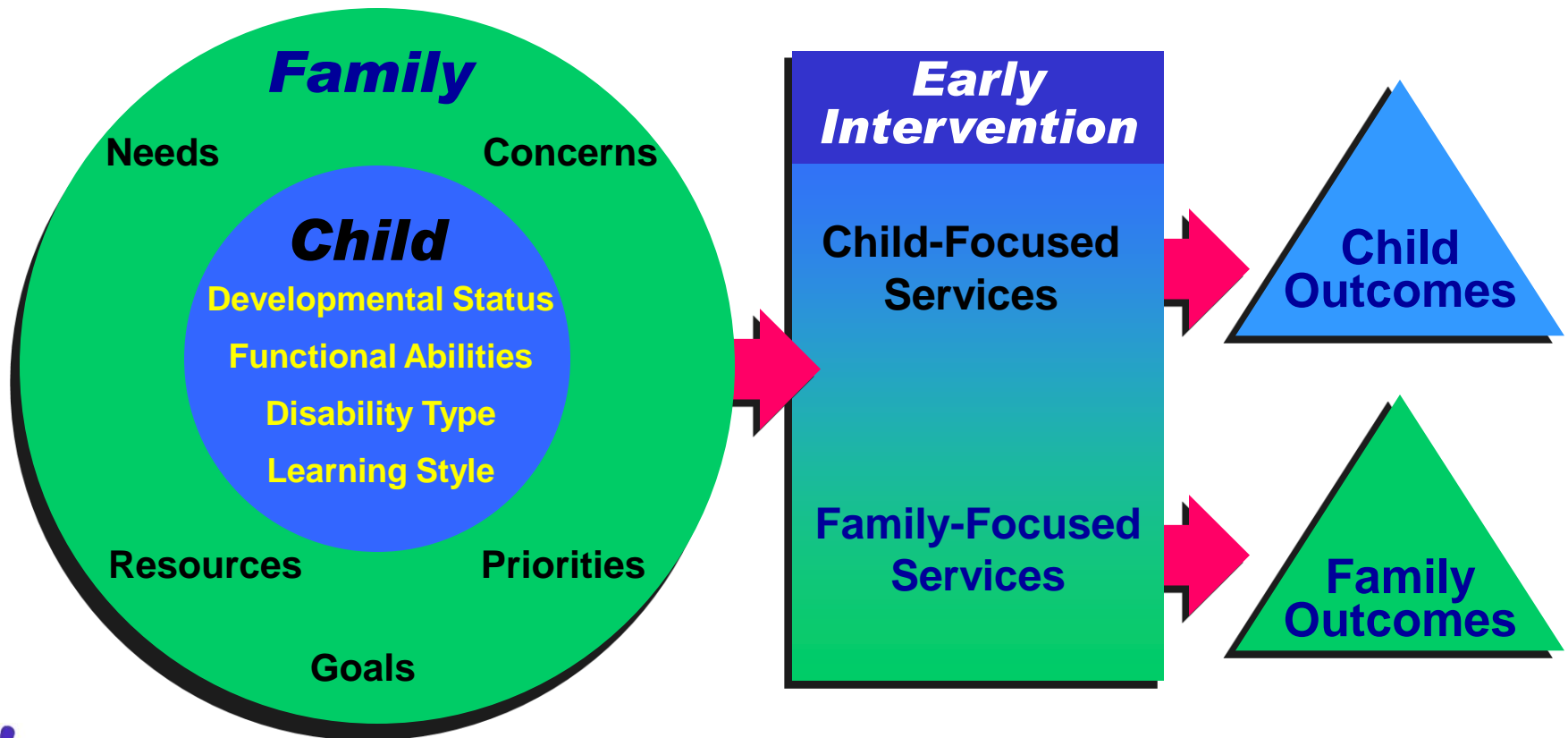
Jim Henson, Mid-South Regional Resource Center

Pam Roush, WVA Dept. of Health and Human Services

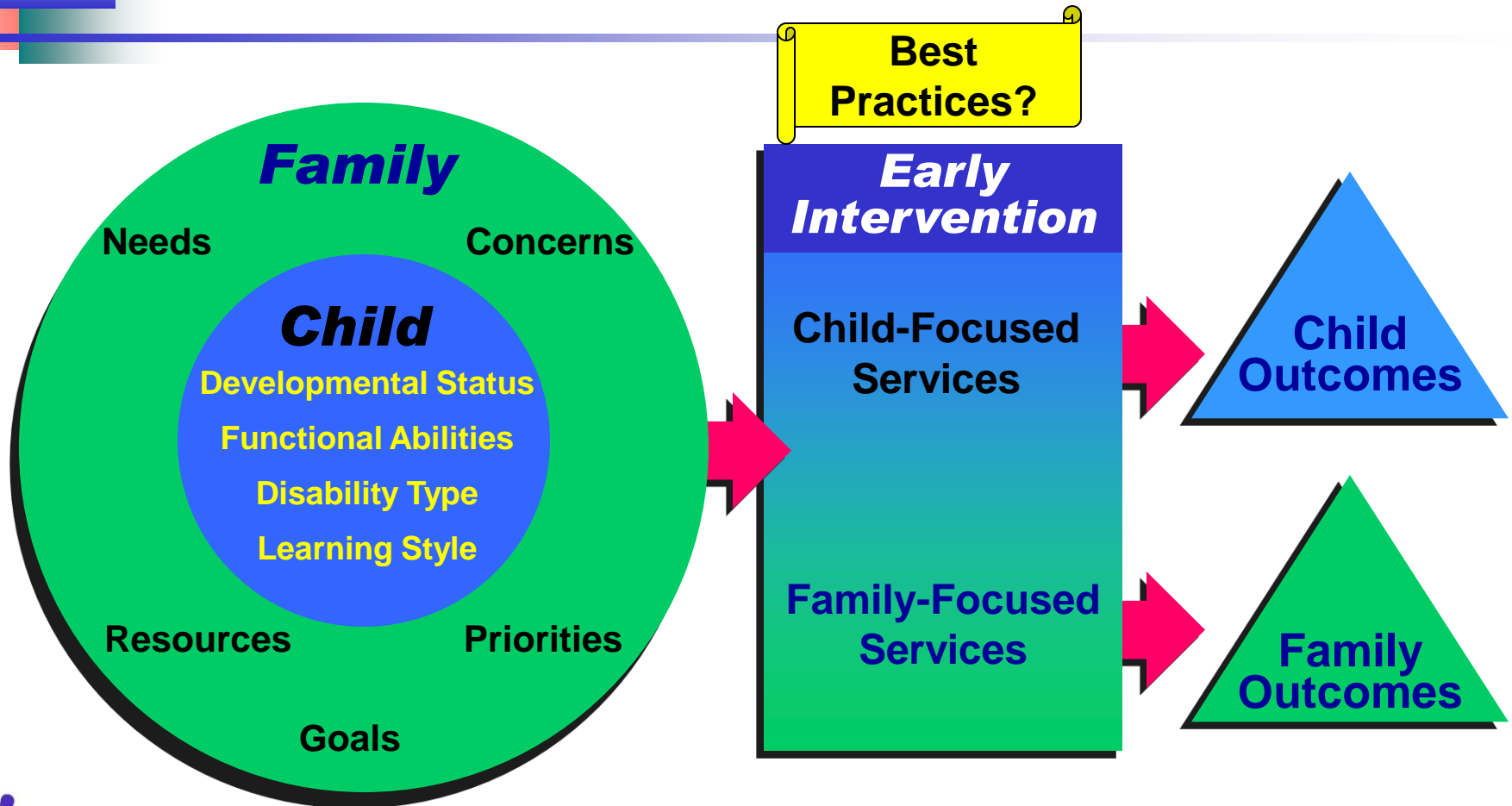
Melissa Raspa, RTI International

Maureen Sullivan, U of Vermont Center on Disability and Community Inclusion

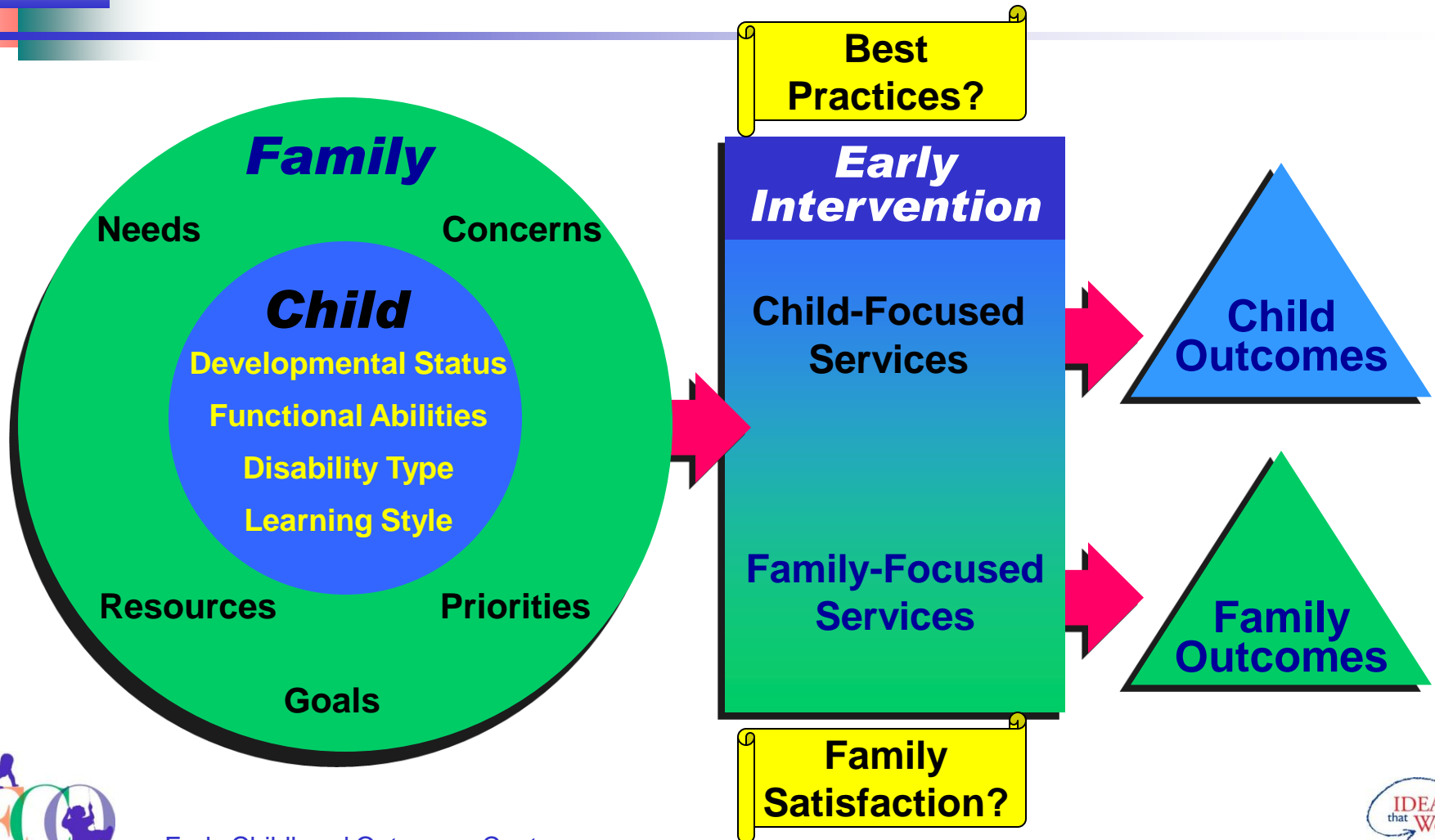
Early intervention services should lead to improved child and family outcomes



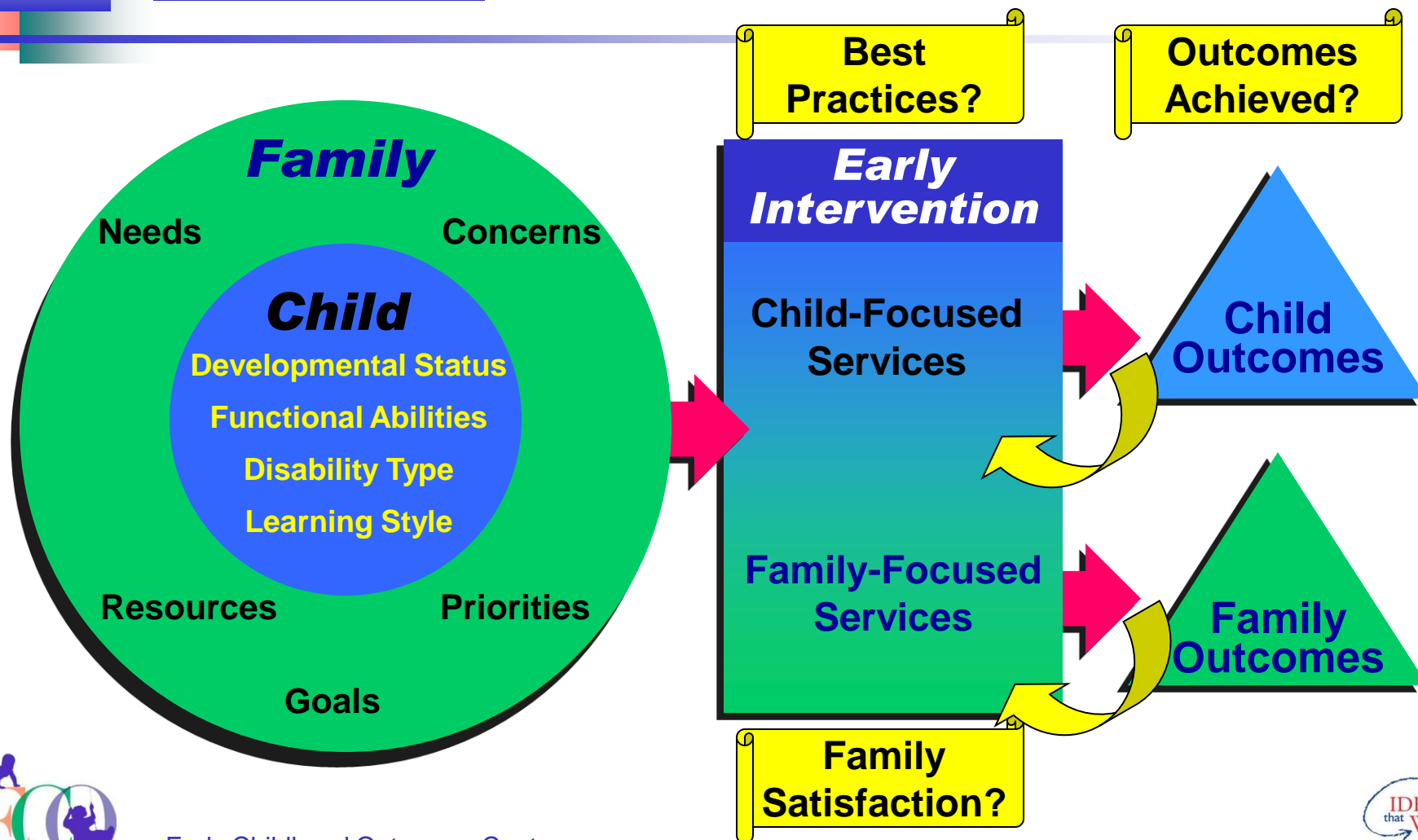
One approach to improving programs focuses on the services



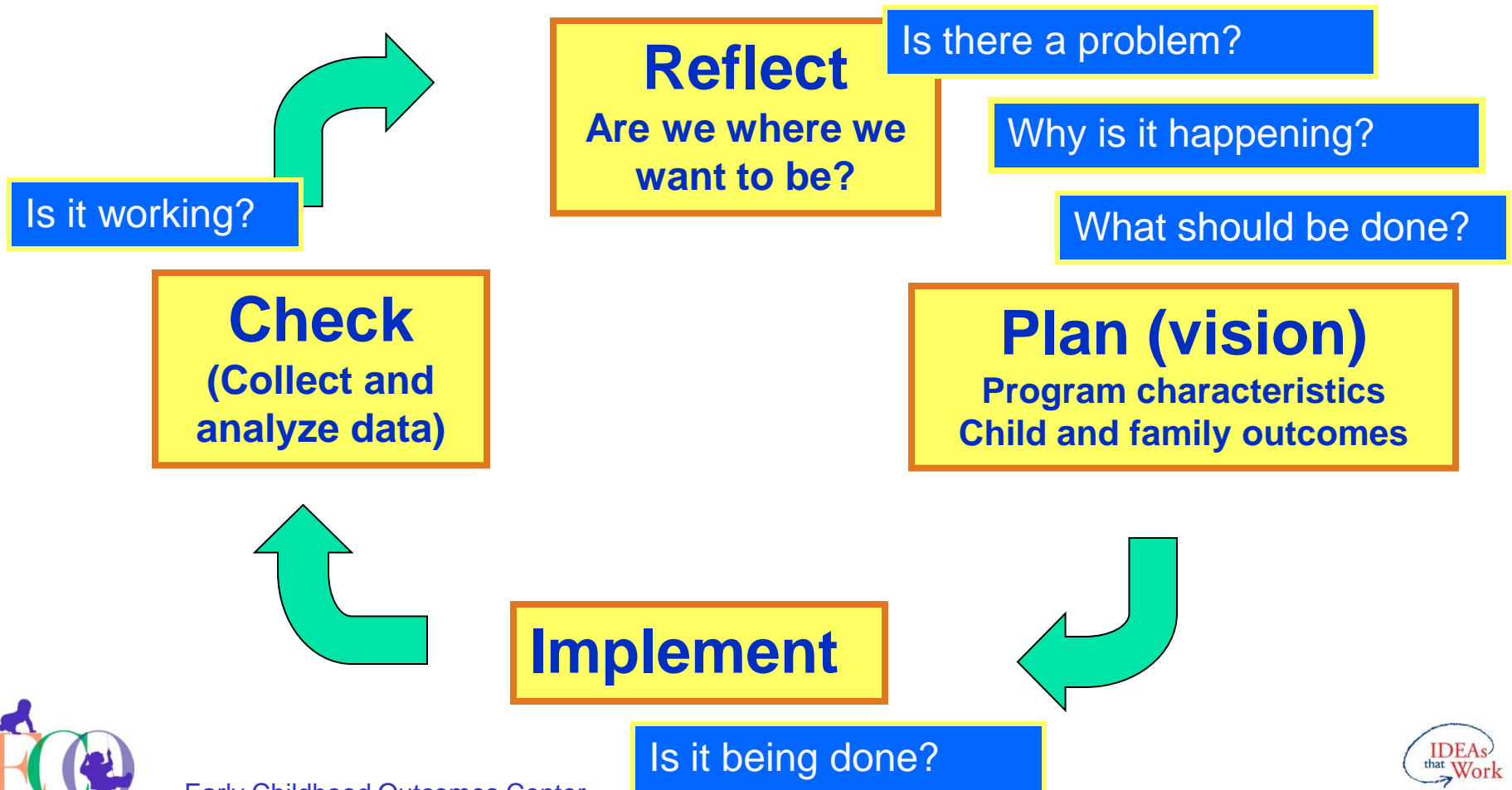
One approach to improving programs focuses on the services



Another key part of program evaluation is determining whether outcomes are achieved



Program improvement is an ongoing cycle of data collection, analysis, reflection, planning, and implementing



Goals for Today

- Show how data from two family surveys can be used to inform program improvement
- Give examples of state data and how they could be used
- Provide an opportunity for audience participants to share and discuss other ideas

